

# ASSEMBLY INSTRUCTIONS FOR #99865 (38259-13)

FIG.A

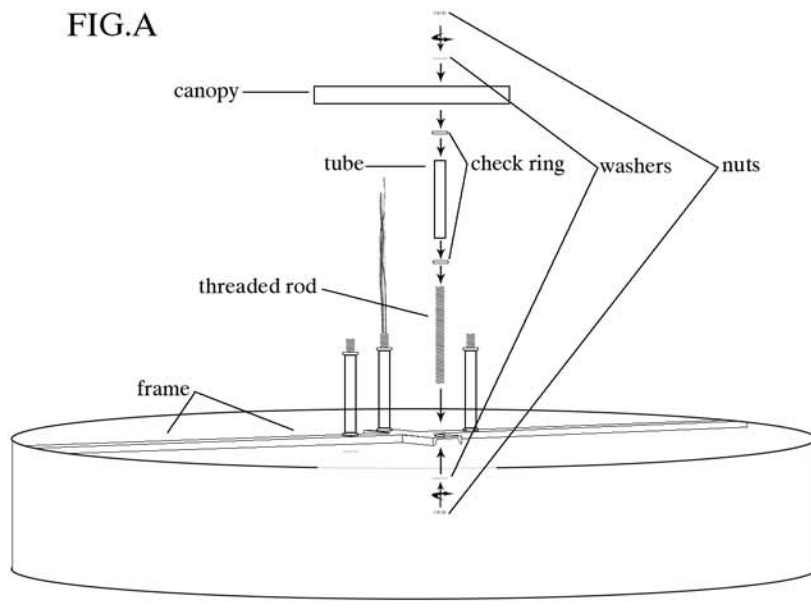


FIG.B

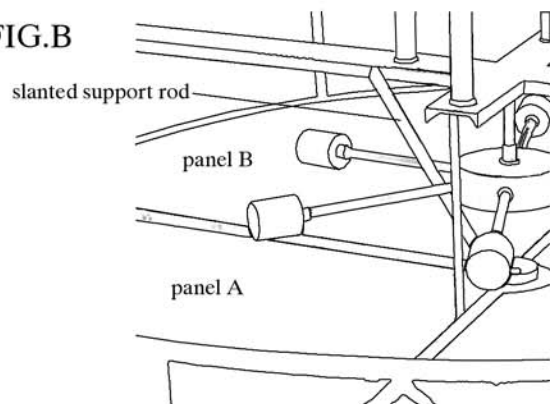
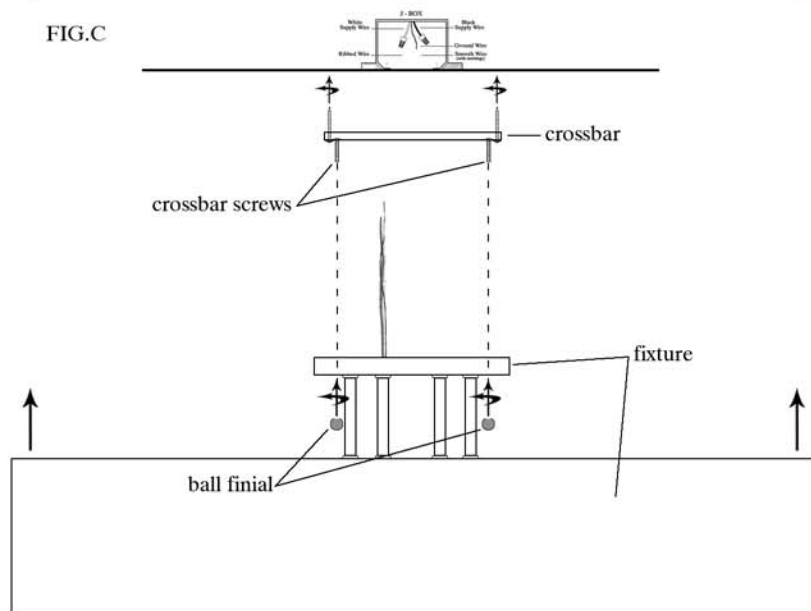


FIG.C



## IMPORTANT

**TURN OFF THE POWER AT THE MAIN FUSE OR CIRCUIT BREAKER BOX BEFORE STARTING INSTALLATION**

**CAREFULLY UNPACK AND IDENTIFY ALL PARTS BEFORE ASSEMBLY. BULBS ARE NOT INCLUDED**

**THIS FIXTURE WEIGHS OVER 50 LBS. NEC:314.27B, A luminaire that weighs more than 23kg (50lb) shall be supported independently of the outlet box unless the outlet box is listed AND MARKED for the MAXIMUM weight to be supported.**

1. Remove nuts, washers, check ring and tube from threaded rod. FIG.A
2. Attach threaded rod to frame. Place check ring, tube and check ring onto threaded rod as shown. FIG.A
3. Place canopy onto completed fixture rods and attach with washer and canopy nuts. FIG.A
4. To attach fixture to ceiling and installing light bulbs remove panel A and B (panel A and B are separated by slanted support rod. FIG.B
5. Attach crossbar. FIG.C Wire as per local electrical code.
6. Place fixture up and onto crossbar screws, screw ball finial onto crossbar screws and tighten to canopy. FIG.C
7. Replace panels A and B. FIG.B



*"A Commitment to Excellence in Lighting and Service"*

**CALL OUR CUSTOMER SERVICE DEPARTMENT AT 1-800-222-4009**

**MONDAY - FRIDAY 8:00 a.m. - 6:00 p.m. ET**

**visit us on the web at [www.meyda.com](http://www.meyda.com)**