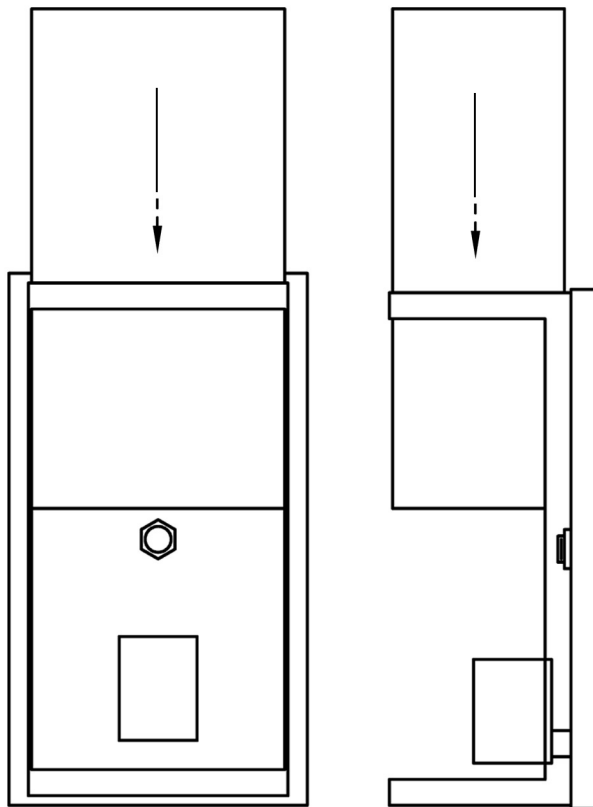


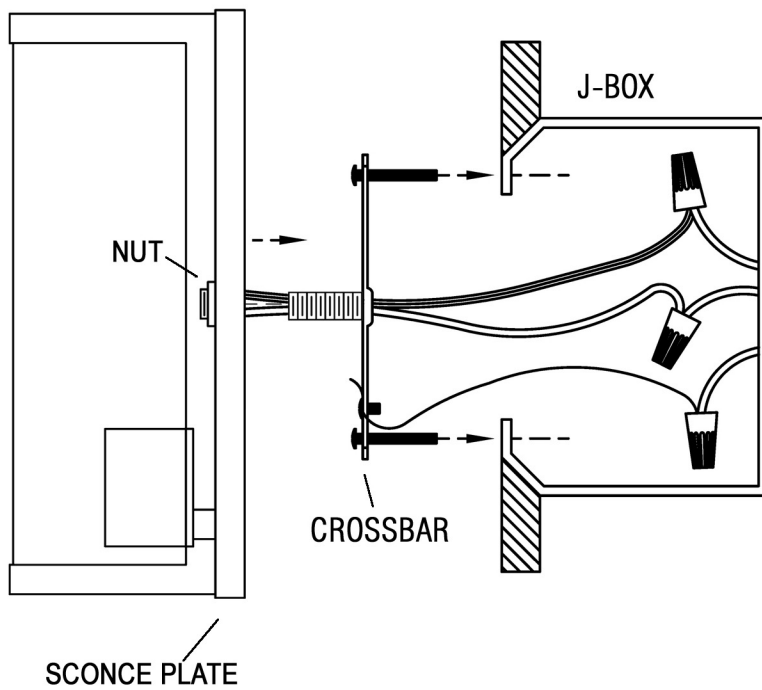
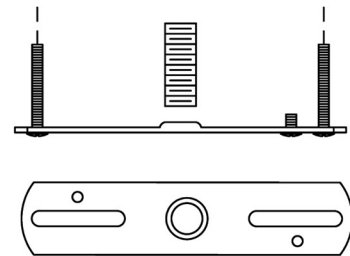
ASSEMBLY INSTRUCTIONS FOR (QSC1-05-)



QSC1-05-

SLIDE GLASS SHADE
FROM TOP OF FIXTURE
INTO FRAME

THE LIP AT THE BOTTOM
OF SHADE WILL HOLD
GLASS IN PLACE



IMPORTANT

TURN OFF THE POWER AT THE
MAIN FUSE OR CIRCUIT BREAKER
BOX BEFORE
STARTING INSTALLATION

CAREFULLY UNPACK AND IDENTIFY ALL
PARTS BEFORE ASSEMBLY. BULBS ARE
NOT INCLUDED

1. Remove crossbar from scone plate. (save hex nut).
2. Attach crossbar to J-BOX using screws provided.
3. Wire scone to J-BOX per local electrical code. Do not run wire through nipple/center of crossbar!
4. Slide scone plate over nipple attached to crossbar and secure against wall using hex nut that had been removed in step 1.
5. Turn power on to J-Box



"A Commitment to Excellence in Lighting and Service"

CALL OUR CUSTOMER SERVICE DEPARTMENT AT 1-800-222-4009

MONDAY - FRIDAY 8:00 a.m. - 6:00 p.m. ET

visit us on the web at www.meyda.com