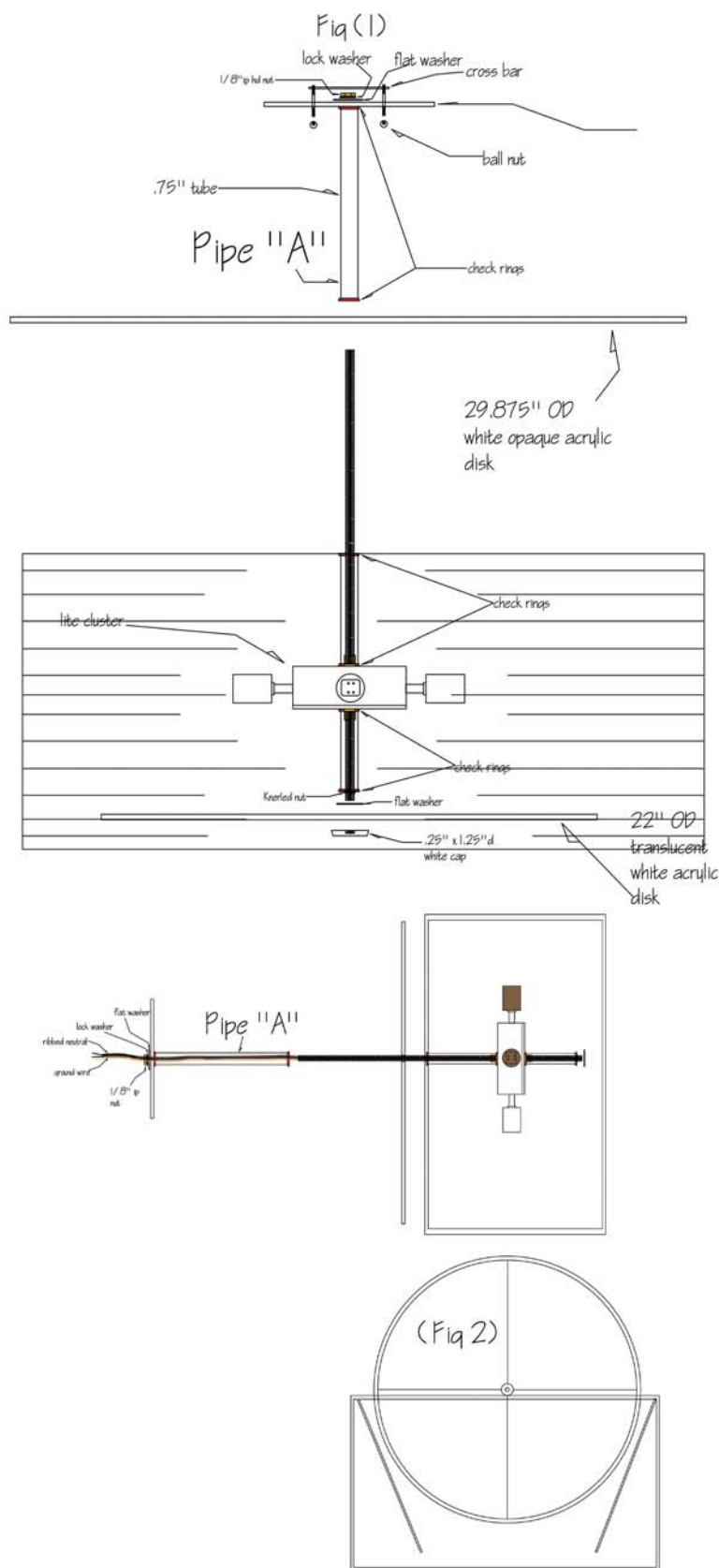


ASSEMBLY INSTRUCTIONS FOR #67872 (49023-34,30"Drum)



IMPORTANT

TURN OFF THE POWER AT THE MAIN FUSE OR CIRCUIT BREAKER BOX BEFORE STARTING INSTALLATION

CAREFULLY UNPACK AND IDENTIFY ALL PARTS BEFORE ASSEMBLY. BULBS ARE NOT INCLUDED

1. Each fixture component are shipped in two separate boxes. "A" is the 30" fabric shade. Box "B" are two diffusers, cluster assembly and four twist and lock 13 watt CFLs.
2. Remove 1/8" ip nut (fig1) from top of ceiling canopy. Separate ceiling canopy disk from 3/4" pipe "A".
3. Remove fabric shade from box "A". Fold 2 clean box sides in. Use layex gloves when handling fabric shade to keep from soiling whit shade. Set shade sideways into box (fig 2).
4. Slide threaded 24" portion of 1/8"ip rod through inside of shade spider with wire to check ring. Remove protective paper from both sides of diffusers. Slip 29.75" diffuser disk over wire and threaded rod and reattach 3/4" pipe "A" over threaded rod with check rings on top and bottom of pipe. DIFFUSER MOUNTS ON TOP OF SPIDER.
5. Install flat and lock washer with 1/8"ip nut on top of disk canopy. Tighten securely.
6. Mount crossbar to "J" box and lift shade assembly to "J" box and wire as per local electrical code. Ribbed wire is the neutral wire.
7. Install four twist-lock CFLs into cluster and lamp with 13 watt 4 pin G24q-1 bulbs.
8. Place flat washer on top of bottom 22" diffuser and secure with 1 1/4" white finial.

For technical assistance call: Tony Santucci @ 1-800-222-4009 ext.240, cell # 315-292-8017 or email: Tonsantucci@meyda.com.



"A Commitment to Excellence in Lighting and Service"

CALL OUR CUSTOMER SERVICE DEPARTMENT AT 1-800-222-4009

MONDAY - FRIDAY 8:00 a.m. - 6:00 p.m. ET

visit us on the web at www.meyda.com