

ASSEMBLY INSTRUCTIONS FOR #QVA4-36-2/QB251-09R-142(52451)

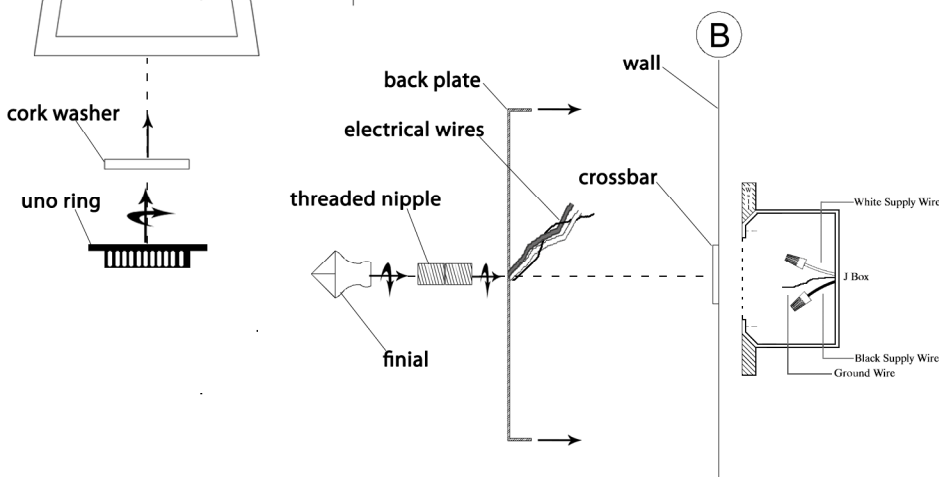
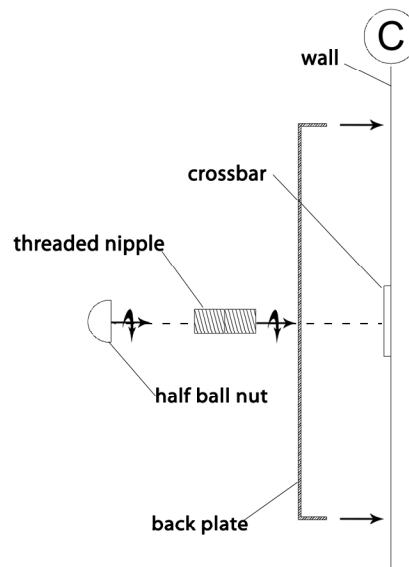
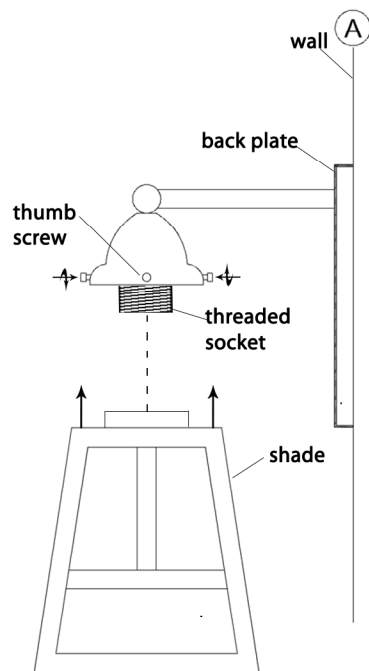
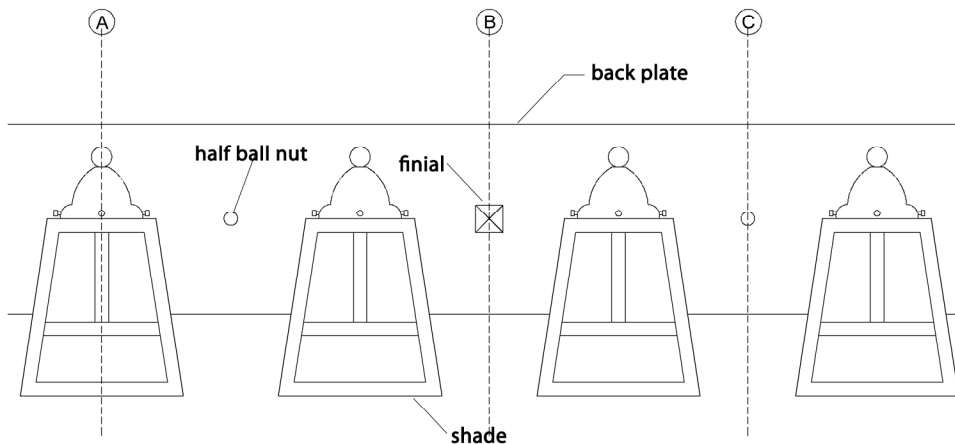
IMPORTANT

TURN OFF THE POWER AT THE MAIN FUSE OR CIRCUIT BREAKER BOX BEFORE STARTING INSTALLATION

CAREFULLY UNPACK AND IDENTIFY ALL PARTS BEFORE ASSEMBLY. BULBS ARE NOT INCLUDED

Note: The letters A,B,& C in the top figure coincide with the A,B, & C details in the figures below.

- 1.) Mount center crossbar to j-box using customer supplied screws(2). (B)
- 2.) Mount the other crossbars depicted in details (A & C) to the wall using customer supplied screws.
- 3.) Screw the (3) threaded nipples into the (3) crossbars.
- 4.) Hold up back plate to wall and wire as per local electrical codes.
- 5.) Attach the back plate to the threaded nipples.
- 6.) Secure back plate to wall using the half ball nuts(2) and finial.
- 7.) Attach shades to threaded sockets followed by cork washers and secure with uno rings.
- 8.) Tighten thumb screws.



"A Commitment to Excellence in Lighting and Service"

CALL OUR CUSTOMER SERVICE DEPARTMENT AT 1-800-222-4009

MONDAY - FRIDAY 8:00 a.m. - 6:00 p.m. ET

visit us on the web at www.meyda.com