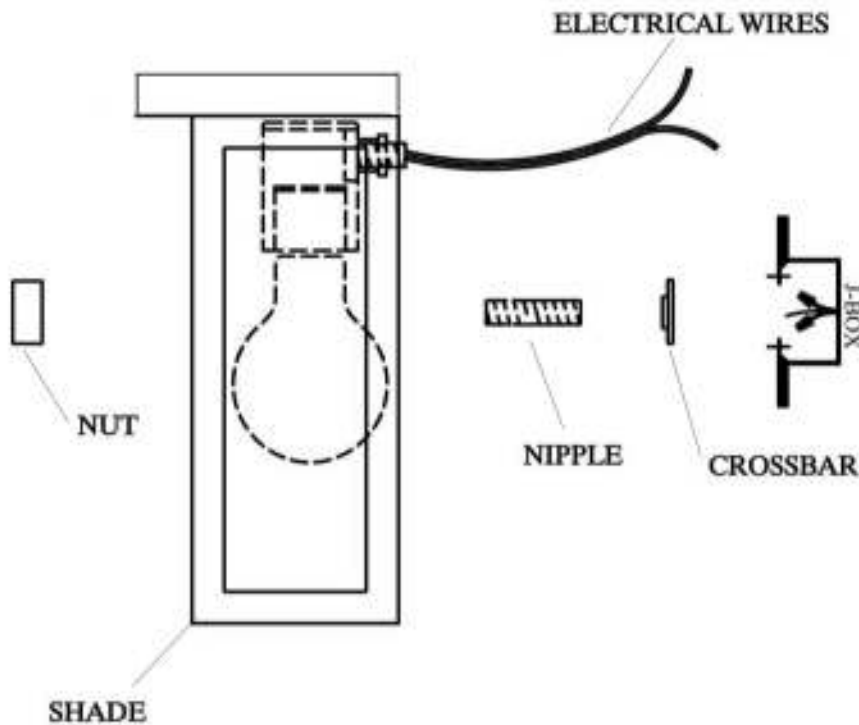


ASSEMBLY INSTRUCTIONS FOR #43548



IMPORTANT

TURN OFF THE POWER AT THE MAIN FUSE OR CIRCUIT BREAKER BOX BEFORE STARTING INSTALLATION

CAREFULLY UNPACK AND IDENTIFY ALL PARTS BEFORE ASSEMBLY. BULBS ARE NOT INCLUDED

- 1.) Attach crossbar to j-box using customer provided screws.
- 2.) Screw nipple into crossbar.
- 3.) Wire as per local electrical codes.
- 4.) Attach shade to nipple.
- 5.) Secure with nut.
- 6.) Install light bulb.



"A Commitment to Excellence in Lighting and Service"

CALL OUR CUSTOMER SERVICE DEPARTMENT AT 1-800-222-4009

MONDAY - FRIDAY 8:00 a.m. - 6:00 p.m. ET

visit us on the web at www.meyda.com