

INSTALLATION INSTRUCTIONS

FOR ITEM 287885



CAUTION: FAILURE TO INSTALL THIS FIXTURE PROPERLY MAY RESULT IN SERIOUS PERSONAL INJURY OR DEATH AND PROPERTY DAMAGE. We recommend installation by a licensed electrician.

This product must be installed in accordance with applicable installation code(s), by a person familiar with the construction and operation of the product and the hazards involved.*

Caution: Do not exceed maximum wattage noted on fixture. Use only recommended bulbs with fixture.

FIXTURE COMPONENTS

1. CANOPY W/ MOUNTING PLATE
2. CHAIN W/ QUICK LINKS
3. ARMS (VARIOUS LENGTHS)
4. HUB
5. TOP RING
6. MIDDLE RING
7. BOTTOM RING
8. GLASS SHADES X36 W/UNO RING

Caution:

***Fixture is OVERWEIGHT and not suitable for installation with standard Junction Box.
Be sure power is off at the main breaker box prior to installation.
Read all instructions in their entirety before beginning installation.***

1. Carefully unpack all components and make certain that everything is on hand.
2. Separate the mounting plate from the canopy by unscrewing acorn nuts, keep these for later.
3. Secure mounting plate to the ceiling ensuring that the connection is suitable to hold a minimum of 200 lbs and the electrical supply wires remain accessible
4. Open the quick link on the chain and hook onto the u bolt and close quick link and slide the canopy up the chain.
5. Place canopy back over the mounting plate and secure using the acorn nuts.
6. Open the quick link on the loose end of the chain and hook onto the loop on the hub and close quick link.
7. Run the lead wire up the chain weaving through every 3rd Chain link and bring the supply wire out from opening in the canopy. The canopy can be dropped down if necessary by uncrewing the acorns nuts securing it.
8. Following all local codes and procedures, make electrical connections from lead wire to supply wires.
9. With at least 3 people, get the top ring and while supporting it, hook arms onto the loops on the top ring. Make sure the arm with the lead wire lines up wire coming out of the ring.
10. Connect molex from the arm to the molex from the ring.
11. With at least 3 people, get the middle ring and while supporting it, hook arms onto the loops on the middle ring. Make sure the arm with the lead wire lines up wire coming out of the ring.
12. Connect molex from the arm to the molex from the ring.

INSTALLATION INSTRUCTIONS

FOR ITEM 287885

Meyda
CUSTOM LIGHTING

CAUTION: FAILURE TO INSTALL THIS FIXTURE PROPERLY MAY RESULT IN SERIOUS PERSONAL INJURY OR DEATH AND PROPERTY DAMAGE. We recommend installation by a licensed electrician.

This product must be installed in accordance with applicable installation code(s), by a person familiar with the construction and operation of the product and the hazards involved.*

Caution: Do not exceed maximum wattage noted on fixture. Use only recommended bulbs with fixture.

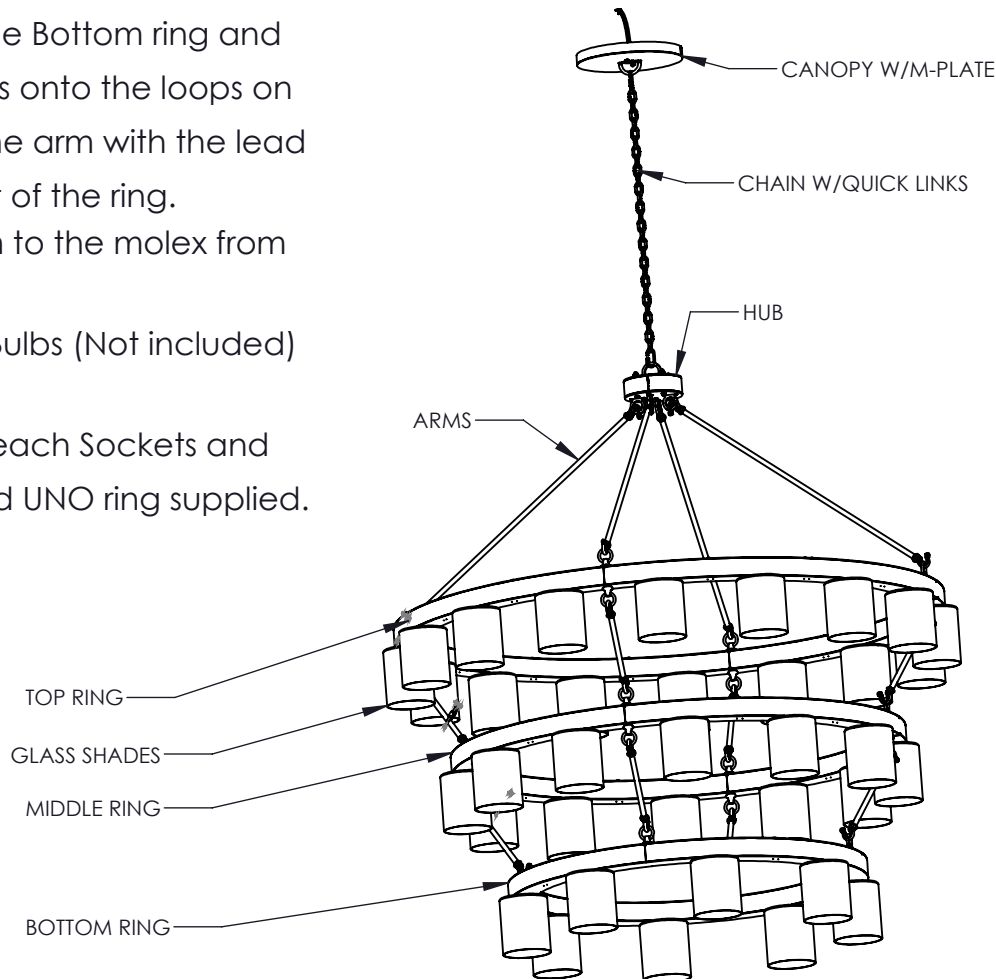
FIXTURE COMPONENTS

1. CANOPY W/ MOUNTING PLATE
2. CHAIN W/ QUICK LINKS
3. ARMS (VARIOUS LENGTHS)
4. HUB
5. TOP RING
6. MIDDLE RING
7. BOTTOM RING
8. GLASS SHADE X 36 W/UNO RING

Caution:

Fixture is OVERWEIGHT and not suitable for installation with standard Junction Box.
Be sure power is off at the main breaker box prior to installation.
Read all instructions in their entirety before beginning installation.

14. With at least 3 people, get the Bottom ring and while supporting it, hook arms onto the loops on the middle ring. Make sure the arm with the lead wire lines up wire coming out of the ring.
15. Connect molex from the arm to the molex from the ring.
16. Install 36 x E26 A19 LED 12W Bulbs (Not included) into Sockets.
17. Place the Glass Shade over each Sockets and secure using cork washer and UNO ring supplied.
18. Power on and ENJOY!!





INSTALLATION INSTRUCTIONS

"A Commitment to Excellence in Lighting and Service"

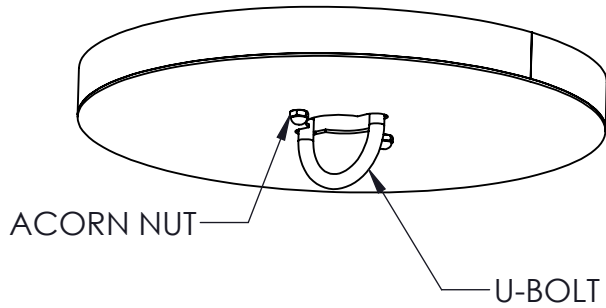
CALL OUR CUSTOMER SERVICE DEPARTMENT AT 1-800-222-4009

MONDAY - FRIDAY 9:00a.m - 5:00p.m ET

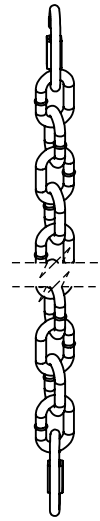
visit us on the web at www.meyda.com

REVISION:

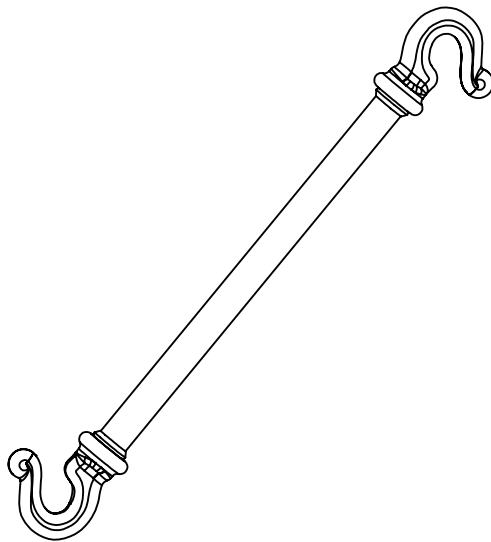
1. CANOPY W/ MOUNTING PLATE



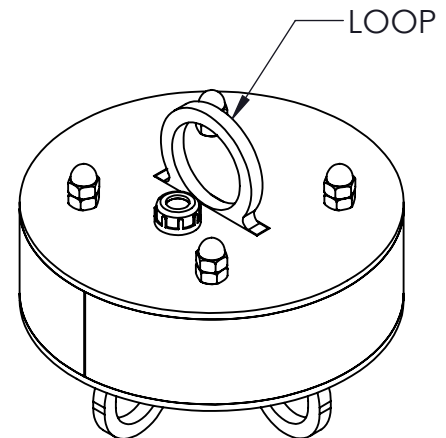
2. CHAIN W/ QUICK LINKS



3. ARM 7" LONG X8 29-1/4" LONG X4



4. HUB



*DIMENSIONS AND DETAILS ARE SUBJECT TO MODIFICATION DURING PRODUCTION
© MEYDA TIFFANY INC © DESIGN COPYRIGHT, MEYDA TIFFANY, INC. ALL RIGHTS RESERVED, NO UNAUTHORIZED DUPLICATION

*TRANSPARENT FINISHES WILL VARY DEPENDING ON THE MATERIAL TO WHICH IT IS APPLIED AND THE FABRICATION TECHNIQUE.



ID# 203556-1515B(287885)	BULB# 36 (BULBS NOT INCLUDED)	DATE:10/6/2025
CUST. DESIGN#	TYPE: E26 A19 LED	DRAWN BY:TP1063
FIXTURE TYPE: CHANDELIER	WATTS:12	VOLTAGE:120
SCALE: 1:32		
LENS COLOR:--301571 (5"W X 6"H MERCURY COBBLESKILL GLASS NECKLESS)	TOTAL AMPS:3.6	APPROVAL:
METAL FINISH:3BLKSATWI BLACK SATIN WROUGHT IRON (107553)	LOCATION: DAMP	EST. WEIGHT:164.87 LBS
MATERIAL:STEEL/ GLASS	NOTES:	SHEET: 3 OF 4



INSTALLATION INSTRUCTIONS

REVISION:

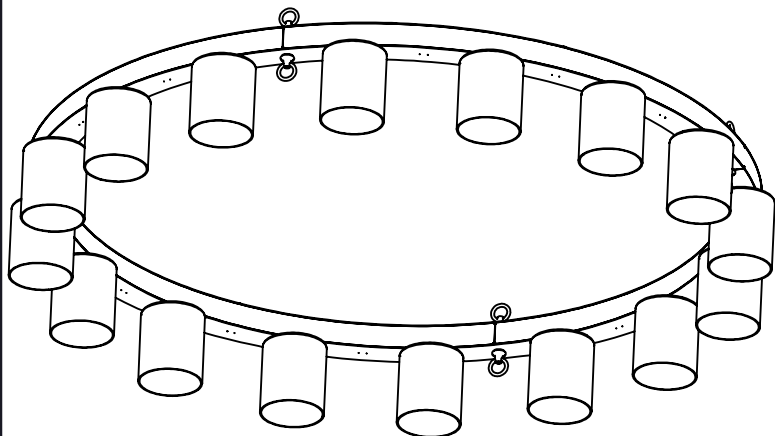
"A Commitment to Excellence in Lighting and Service"

CALL OUR CUSTOMER SERVICE DEPARTMENT AT 1-800-222-4009

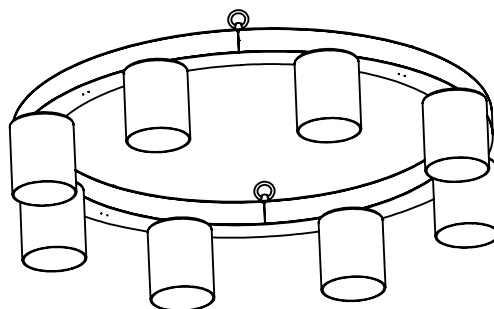
MONDAY - FRIDAY 9:00a.m - 5:00p.m ET

visit us on the web at www.meyda.com

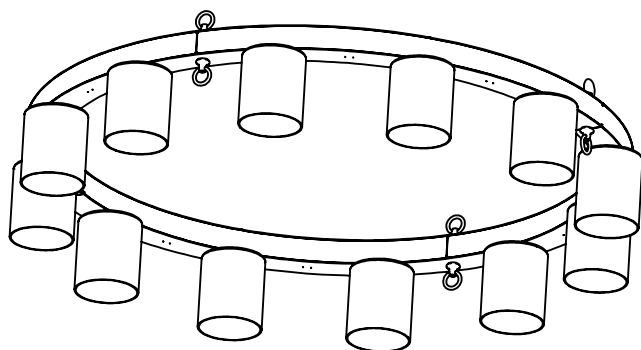
5. TOP RING W/SHADE INSTALLED



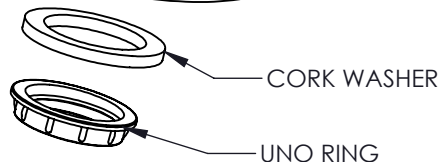
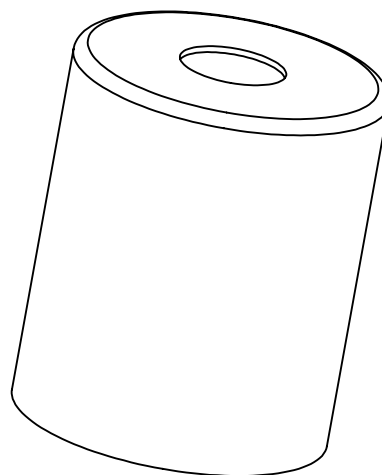
7. BOTTOM RING W/SHADE INSTALLED



6. MIDDLE RING W/SHADE INSTALLED



8. GLASS SHADE X36



CORK WASHER

UNO RING



*DIMENSIONS AND DETAILS ARE SUBJECT TO MODIFICATION DURING PRODUCTION
© MEYDA TIFFANY INC © DESIGN COPYRIGHT, MEYDA TIFFANY, INC. ALL RIGHTS RESERVED, NO UNAUTHORIZED DUPLICATION

*TRANSPARENT FINISHES WILL VARY DEPENDING ON THE MATERIAL TO WHICH IT IS APPLIED AND THE FABRICATION TECHNIQUE.



ID# 203556-1515B(287885)	BULB# 36 (BULBS NOT INCLUDED)	DATE:10/6/2025
CUST. DESIGN#	TYPE: E26 A19 LED	DRAWN BY:TP1063
FIXTURE TYPE: CHANDELIER	WATTS:12	VOLTAGE:120
SCALE: 1:32		
LENS COLOR:--301571 (5"W X 6"H MERCURY COBBLESKILL GLASS NECKLESS)	TOTAL AMPS:3.6	APPROVAL:
METAL FINISH:3BLKSATWI BLACK SATIN WROUGHT IRON (107553)	LOCATION: DAMP	EST. WEIGHT:164.87 LBS
MATERIAL:STEEL/ GLASS	NOTES:	SHEET: 4 OF 4