

# INSTALLATION INSTRUCTIONS

FOR ITEM 284421



**CAUTION: FAILURE TO INSTALL THIS FIXTURE PROPERLY MAY RESULT IN SERIOUS PERSONAL INJURY OR DEATH AND PROPERTY DAMAGE.** We recommend installation by a licensed electrician.

This product must be installed in accordance with applicable installation code(s), by a person familiar with the construction and operation of the product and the hazards involved.\*

**Caution:** Do not exceed maximum wattage noted on fixture. Use only recommended bulbs with fixture.

## FIXTURE COMPONENTS

1. CROSSBAR W/ STUDS
2. FRAME
3. PEACOCK SHADES
4. BOTTOM MOUNTS

### ***Caution:***

***Be sure power is off at the main breaker box prior to installation.  
Read all instructions in their entirety before beginning installation.***

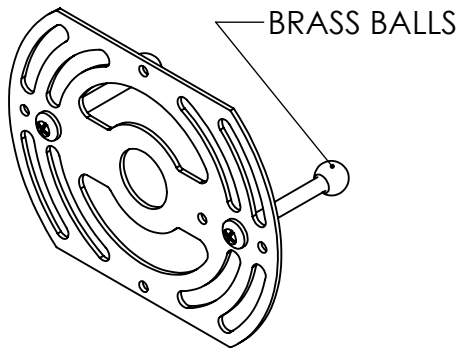
1. Carefully unpack all components and make certain that everything is on hand.
2. Release crossbar from canopy by unscrewing brass balls. (save for later)
3. Using customer supplied hardware, affix crossbar to J-box ensuring that connection is suitable for a minimum of 20lbs and that electrical supply wires remain accessible.
4. Unravel lead wire from the back of the canopy and get fixture in a position to make wire connections.
5. Following all local codes and procedures, make electrical connections from supply wires to lead wires.
6. Fix canopy to crossbar using brass balls from earlier.
7. Slide bottom mounts onto fixture and secure to surface using customer supplied hardware.
8. Unscrew all thumb screws from shade caps and put to the side.
9. One at a time, secure shade in cap using removed thumb screws. (repeat 6x)
10. Install 6X 60WATT E26 A15 Bulbs (not included) into sockets.
11. Power on and ENJOY!!!



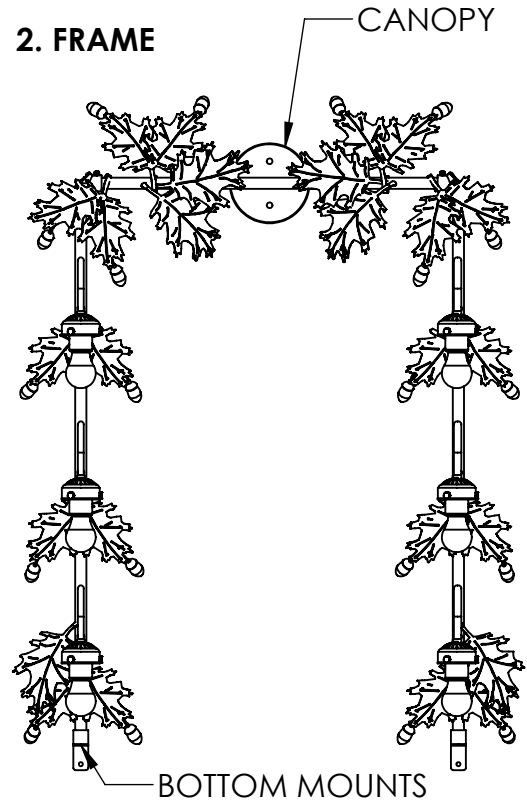
**CUSTOMER PROPOSAL / CUT SHEET**  
**"A Commitment to Excellence in Lighting and Service"**  
CALL OUR CUSTOMER SERVICE DEPARTMENT AT 1-800-222-4009  
MONDAY - FRIDAY 9:00a.m - 5:00p.m ET  
visit us on the web at [www.meyda.com](http://www.meyda.com)

REVISION:

**1. CROSSBAR W/ STUDS**



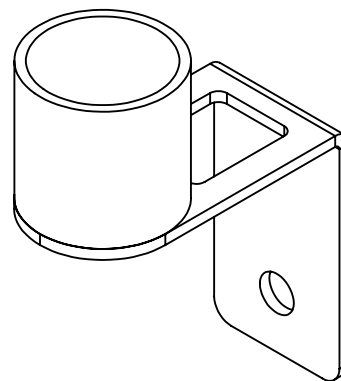
**2. FRAME**



**3. PEACOCK SHADES**



**4. BOTTOM MOUNTS**



\*DIMENSIONS AND DETAILS ARE SUBJECT TO MODIFICATION DURING PRODUCTION  
© MEYDA TIFFANY INC © DESIGN COPYRIGHT, MEYDA TIFFANY, INC. ALL RIGHTS RESERVED, NO UNAUTHORIZED DUPLICATION

\*TRANSPARENT FINISHES WILL VARY DEPENDING ON THE MATERIAL TO WHICH IT IS APPLIED AND THE FABRICATION TECHNIQUE.



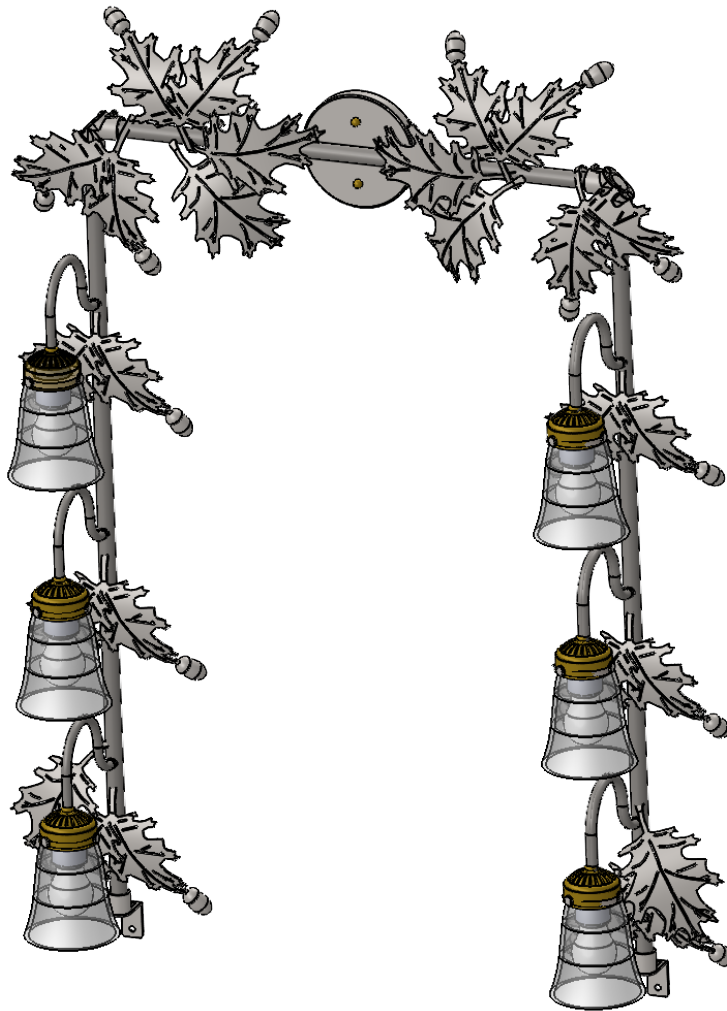
ID# 76775-1500 & TR872-04-1(284421)	W/O# 1514486	BULB# 6 (BULBS NOT INCLUDED)	DATE:3/19/2025
CUST. DESIGN#	QTY: 2	TYPE: E26 A15	DRAWN BY:IF1071
FIXTURE TYPE: VANITY	WATTS:60	VOLTAGE:120	SCALE: 1:2
LENS COLOR: (27459) TR872-04R-1 4"W TIFFANY PEACOCK FEATHER FAN LIGHT SHADE	TOTAL AMPS:3	APPROVAL:	
METAL FINISH:3DKBURNANTCOP DARK BURNISHED ANTIQUE COPPER (150138) (TRANSPARENT)	LOCATION: DAMP	EST. WEIGHT: 14.23 LBS	
MATERIAL:STEEL/ GLASS	NOTES:	SHEET: 2 OF 3	



**CUSTOMER PROPOSAL / CUT SHEET**  
**"A Commitment to Excellence in Lighting and Service"**  
CALL OUR CUSTOMER SERVICE DEPARTMENT AT 1-800-222-4009  
MONDAY - FRIDAY 9:00a.m - 5:00p.m ET  
visit us on the web at [www.meyda.com](http://www.meyda.com)

REVISION:

**OVERALL**



**\*DIMENSIONS AND DETAILS ARE SUBJECT TO MODIFICATION DURING PRODUCTION**  
© MEYDA TIFFANY INC © DESIGN COPYRIGHT, MEYDA TIFFANY, INC. ALL RIGHTS RESERVED, NO UNAUTHORIZED DUPLICATION



**\*TRANSPARENT FINISHES WILL VARY DEPENDING ON THE MATERIAL TO WHICH IT IS APPLIED AND THE FABRICATION TECHNIQUE.**

ID# 76775-1500 & TR872-04-1(284421)	W/O# 1514486	BULB# 6 (BULBS NOT INCLUDED)	DATE:3/19/2025
CUST. DESIGN#	QTY: 2	TYPE: E26 A15	DRAWN BY:IF1071
FIXTURE TYPE: VANITY	WATTS:60	VOLTAGE:120	SCALE: 1:8
LENS COLOR: (27459) TR872-04R-1 4"W TIFFANY PEACOCK FEATHER FAN LIGHT SHADE	TOTAL AMPS:3	APPROVAL:	
METAL FINISH:3DKBURNANTCOP DARK BURNISHED ANTIQUE COPPER (150138) (TRANSPARENT)	LOCATION: DAMP	EST. WEIGHT: 14.23 LBS	
MATERIAL:STEEL/ GLASS	NOTES:	SHEET: 3 OF 3	