

INSTALLATION INSTRUCTIONS

FOR ITEM 275555 Nelson Oblong Pendant

Meyda
CUSTOM LIGHTING

CAUTION: FAILURE TO INSTALL THIS FIXTURE PROPERLY MAY RESULT IN SERIOUS PERSONAL INJURY OR DEATH AND PROPERTY DAMAGE. We recommend installation by a licensed electrician. This product must be installed in accordance with applicable installation code(s), by a person familiar with the construction and operation of the product and the hazards involved.*

Caution: Do not exceed maximum wattage noted on fixture. Use only recommended bulbs with fixture.

Caution:

Fixture is OVERWEIGHT and not suitable for installation with standard Junction Box.
Be sure power is off at the main breaker box prior to installation.
Read all instructions in their entirety before beginning installation.

1. Carefully unpack all components and make certain that everything is accounted for.
2. Remove Balls from Canopy Assembly to release Mounting Saddle. Reserve Balls for later use.
3. Affix Mounting Saddle to ceiling ensuring that connection is suitable to hold a minimum of 70lbs and that Supply Wires remain accessible.

If installing on a sloped ceiling, configure Saddle Mounting Holes parallel to ridge beam with opening up slope.

WEARING GLOVES WHEN INSTALLING GLASS IS RECOMMENDED

4. Insert Outer Shade Bottom Glass Panel(labeled B) into Outer Shade Frame. Hold Panel at an angle and carefully insert Panel through end of Frame. Once fully inserted, straighten and let rest inside Channel Tabs.
5. Insert Outer Shade End Panel. Hold Panel at an angle and lower into Frame from above. Once inside, slide top of Panel behind top Channel Tabs and then gently lower it and let rest behind bottom Channel Tabs.
6. Insert Outer Shade Side Panel. Hold Panel at an angle and carefully insert Panel through end of Frame. Once fully inserted, straighten and slide top of Panel behind top Channel Tabs and then gently lower it and let rest behind bottom Channel Tabs.
7. Secure Installed End and Side Glass Panels with Outer Shade Strap by sliding it up between top Channel Tab and Glass then gently lowering it and allowing it to rest between bottom Channel Tab and Glass.
8. Follow Step 6 for installing other Outer Shade Side Panel.
9. Follow Step 7 for installing other Outer Shade Strap.

DO NOT INSTALL REMAINING OUTER SHADE END PANEL AT THIS TIME

10. Insert Inner Shade Bottom Glass Panel(labeled B) into Inner Shade Frame. Hold Panel at an angle and carefully insert Panel through end of Frame. Once fully inserted, straighten and let rest inside Channel Tabs.
11. Insert Inner Shade Side Panel. Hold Panel at an angle and carefully insert Panel through end of Frame. Once fully inserted, straighten and slide top of Panel behind top Channel Tabs and then gently lower it and let rest behind bottom Channel Tabs.
12. Secure Installed End and Side Glass Panels with Inner Shade Strap by sliding it up between top Channel Tab and Glass then gently lowering it and allowing it to rest between bottom Channel Tab and Glass.
13. Follow Step 11 for installing other Inner Shade Side Panel.
14. Follow Step 12 for installing other Inner Shade Strap.
15. Insert Inner Shade End Panel. Hold Panel at an angle and lower into Frame from above. Once inside, slide top of Panel behind top Channel Tabs and then gently lower it and let rest behind bottom Channel Tabs.
16. Follow Step 11 for installing other Inner Shade End Panel.
17. Install remaining Inner Shade Straps following previous instruction.
18. Ensure that Sockets are in the raised position and carefully insert Inner Shade into Outer Shade through open End.
19. Lift Inner Shade aligning holes in Vertical Bars with holes in Outer Shade Frame. Secure with Inner Shade Screws.
20. Feed Fixture Lead Wire through Stem starting at the end with two-Through Holes and slide Stem onto Stem Connection Post. Ensure to align Through Holes in Stem with Through Holes in Post.
21. Feed Stem Connection Hardware Bolts through Holes and secure with Hex and Acorn Nuts on opposite side.
22. Slide Canopy Cover Plate, Canopy, and Half Ball over Lead Wires and Stem and allow them to rest on top of Fixture.

If installing on a sloped ceiling, omit Cover Plate.

23. Compress Roll Pin and feed it through Holes at top of Stem.
24. Slide Half Ball up Stem and engage Roll Pin into Half Ball Channel. Hold Ball place by bending Metal Wire down over Pin.
25. Lift Fixture up to ceiling and set Half Ball into Mounting Saddle.
26. Following All Local Codes and Procedures, make connection from Lead Wires to Supply Wires.
27. Slide Canopy and Cover Plate up to ceiling allowing Mounting Saddle Studs to pass through. Secure with Reserved Balls.

If installing on a sloped ceiling, omit Cover Plate and ensure Canopy Slot is extended down slope.

28. Install 6-E26 60Watt Bulbs(not included). Raise and lower Sockets as necessary to install Bulbs.
29. Power on and ENJOY!!!

INSTALLATION INSTRUCTIONS

FOR ITEM 275555 Nelson Oblong Pendant

Meyda
CUSTOM LIGHTING

CAUTION: FAILURE TO INSTALL THIS FIXTURE PROPERLY MAY RESULT IN SERIOUS PERSONAL INJURY OR DEATH AND PROPERTY DAMAGE. We recommend installation by a licensed electrician. This product must be installed in accordance with applicable installation code(s), by a person familiar with the construction and operation of the product and the hazards involved.*

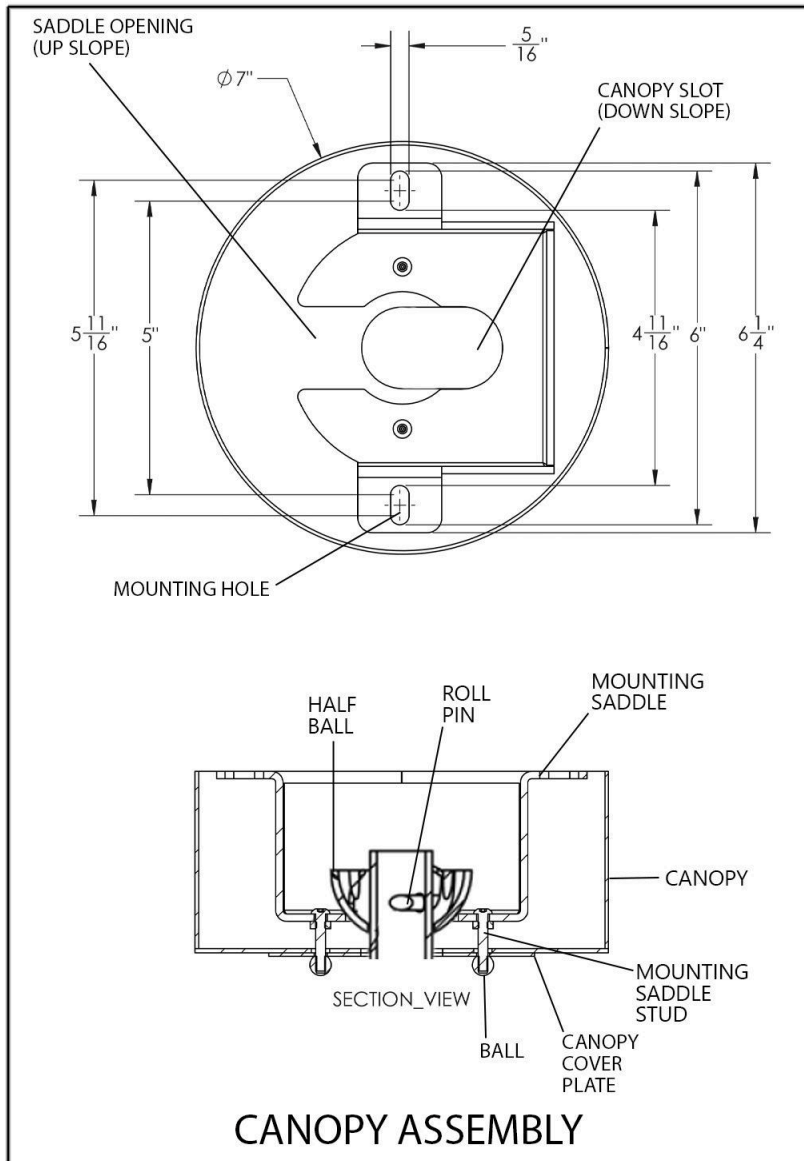
Caution: Do not exceed maximum wattage noted on fixture. Use only recommended bulbs with fixture.

FIXTURE COMPONENTS

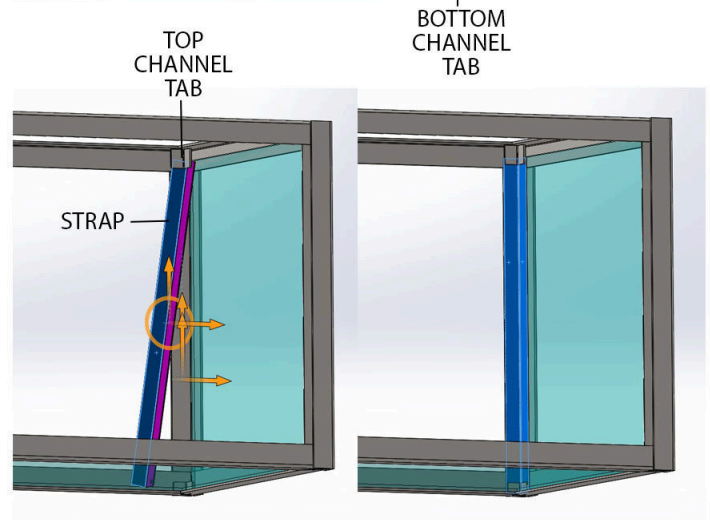
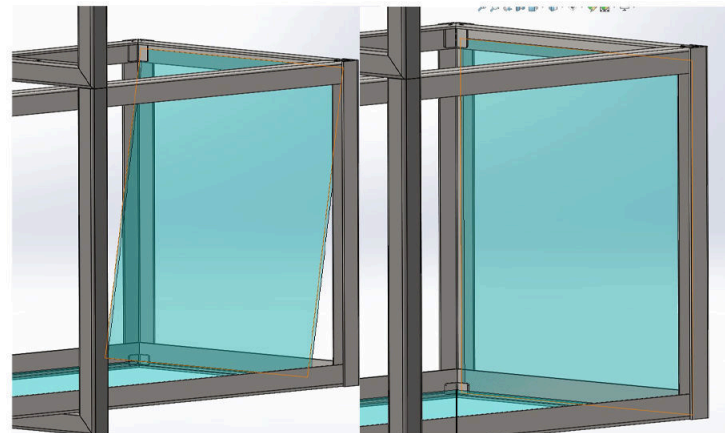
- | | | |
|-----------------------------|----------------------------------|-----------------------------|
| 1. CANOPY ASSEMBLY | 6. GLASS PANELS | 7. OUTER SHADE STRAP(QTY 4) |
| 2. STEM | a. INNER SHADE BOTTOM PANEL | 8. INNER SHADE STRAP(QTY 4) |
| 3. STEM CONNECTION HARDWARE | b. INNER SHADE SIDE PANEL(QTY 2) | 9. INNER SHADE SCREW(QTY 4) |
| a. BOLT(QTY 2) | c. INNER SHADE END PANEL(QTY 2) | |
| b. HEX & ACORN NUTS(QTY 2) | d. OUTER SHADE BOTTOM PANEL | |
| 4. INNER SHADE FRAME | e. OUTER SHADE SIDE PANEL(QTY 2) | |
| 5. OUTER SHADE FRAME | f. OUTER SHADE END PANEL(QTY 2) | |

Caution:

Fixture is OVERWEIGHT and not suitable for installation with standard Junction Box. Be sure power is off at the main breaker box prior to installation. Read all instructions in their entirety before beginning installation.



GLASS INSTALLATION DETAIL



STRAP INSTALLATION DETAIL

INSTALLATION INSTRUCTIONS

FOR ITEM 275555 Nelson Oblong Pendant

Meyda
CUSTOM LIGHTING

CAUTION: FAILURE TO INSTALL THIS FIXTURE PROPERLY MAY RESULT IN SERIOUS PERSONAL INJURY OR DEATH AND PROPERTY DAMAGE. We recommend installation by a licensed electrician. This product must be installed in accordance with applicable installation code(s), by a person familiar with the construction and operation of the product and the hazards involved.*

Caution: Do not exceed maximum wattage noted on fixture. Use only recommended bulbs with fixture.

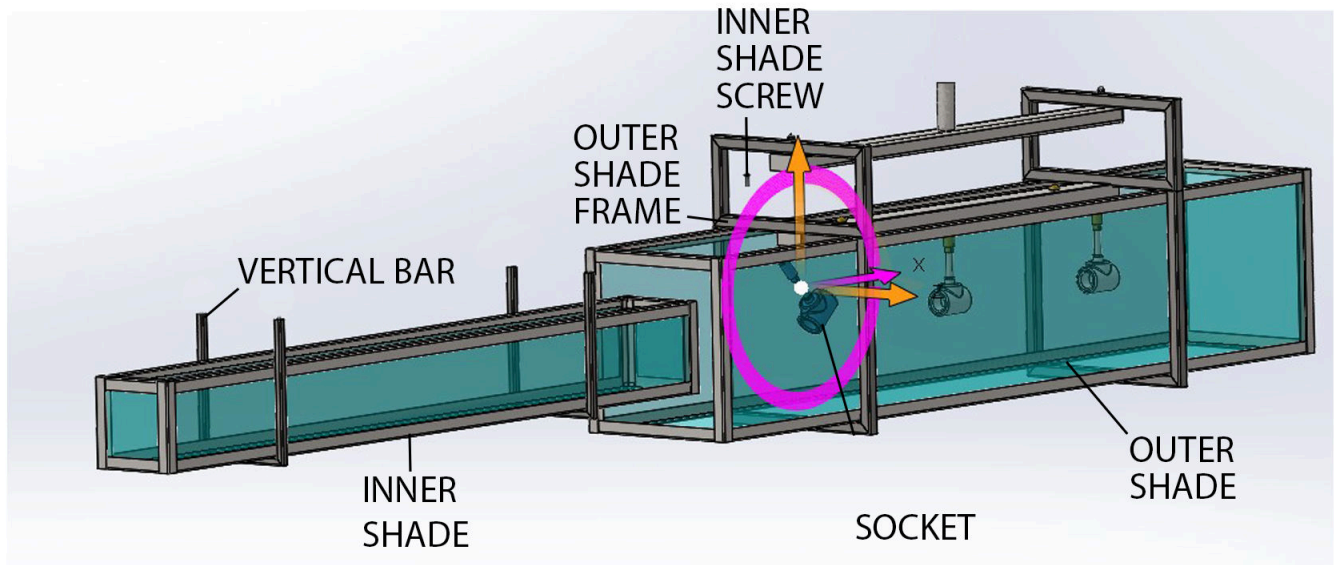
FIXTURE COMPONENTS

- | | | |
|-----------------------------|----------------------------------|-----------------------------|
| 1. CANOPY ASSEMBLY | 6. GLASS PANELS | 7. OUTER SHADE STRAP(QTY 4) |
| 2. STEM | a. INNER SHADE BOTTOM PANEL | 8. INNER SHADE STRAP(QTY 4) |
| 3. STEM CONNECTION HARDWARE | b. INNER SHADE SIDE PANEL(QTY 2) | 9. INNER SHADE SCREW(QTY 4) |
| a. BOLT(QTY 2) | c. INNER SHADE END PANEL(QTY 2) | |
| b. HEX & ACORN NUTS(QTY 2) | d. OUTER SHADE BOTTOM PANEL | |
| 4. INNER SHADE FRAME | e. OUTER SHADE SIDE PANEL(QTY 2) | |
| 5. OUTER SHADE FRAME | f. OUTER SHADE END PANEL(QTY 2) | |

Caution:

Fixture is OVERWEIGHT and not suitable for installation with standard Junction Box.
Be sure power is off at the main breaker box prior to installation.
Read all instructions in their entirety before beginning installation.

INNER SHADE CONNECTION DETAIL



STEM CONNECTION DETAIL

