

# INSTALLATION INSTRUCTIONS

FOR ITEM 221633



**CAUTION: FAILURE TO INSTALL THIS FIXTURE PROPERLY MAY RESULT IN SERIOUS PERSONAL INJURY OR DEATH AND PROPERTY DAMAGE.** We recommend installation by a licensed electrician.

This product must be installed in accordance with applicable installation code(s), by a person familiar with the construction and operation of the product and the hazards involved.\*

**Caution:** Do not exceed maximum wattage noted on fixture. Use only recommended bulbs with fixture.

## FIXTURE COMPONENTS

1. CANOPY ASSEMBLY
2. 240" CHAIN
3. 4 ARM HUB
4. ARMS (QTY: 4)
5. 48" CHANDELIER RING
6. GLASS SHADE (QTY: 16)

### ***Caution:***

***Fixture is OVERWEIGHT and not suitable for installation with standard Junction Box.***

***Be sure power is off at the main breaker box prior to installation.***

***Read all instructions in their entirety before beginning installation.***

1. Carefully unpack all components and make certain that everything is on hand.
2. Unscrew acorn nuts from canopy assembly to release mounting plate (save these for later).
3. Using customer supplied hardware, affix mounting plate to blocking in ceiling ensuring that connection is suitable to hold a minimum of 150lbs and that electrical supply wires remain accessible.
4. Attach desired length of chain to quick link.
5. Weave lead wire through every 3rd link of chain.
6. slide canopy onto end of chain and feed lead wires through wire way.
7. Hang hub by connecting loose end of chain to quick link on mounting plate loop.
8. Following all local codes and procedures, make electrical connections from fixture lead wires to supply wires.
9. Slide canopy onto mounting plate screws and secure with acorn nuts.
10. Attach arms to 48" chandelier ring making sure to line up arms with wires to the loops where wire is coming out of ring.
11. Connect molex from the arms to the molex from the ring.
12. Install 16 E12 BA9 60 watt bulbs (not included) into sockets.
13. Power on and ENJOY!



# INSTALLATION INSTRUCTIONS

REVISION:

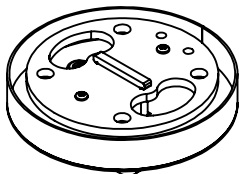
"A Commitment to Excellence in Lighting and Service"

CALL OUR CUSTOMER SERVICE DEPARTMENT AT 1-800-222-4009

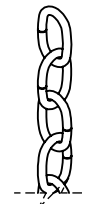
MONDAY - FRIDAY 9:00a.m - 5:00p.m ET

visit us on the web at [www.meyda.com](http://www.meyda.com)

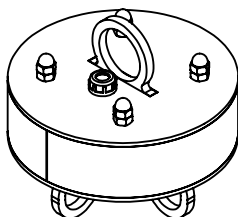
## 1.) CANOPY ASSEMBLY



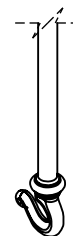
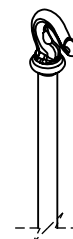
## 2.) 240" CHAIN



## 3.) 4 ARM HUB



## 4.) ARMS QTY: 4



\*DIMENSIONS AND DETAILS ARE SUBJECT TO MODIFICATION DURING PRODUCTION  
© MEYDA TIFFANY INC © DESIGN COPYRIGHT, MEYDA TIFFANY, INC. ALL RIGHTS RESERVED, NO UNAUTHORIZED DUPLICATION

\*TRANSPARENT FINISHES WILL VARY DEPENDING ON THE MATERIAL TO WHICH IT IS APPLIED AND THE FABRICATION TECHNIQUE.



ID# 18742-44.16239A(221633)	W/O# 1519000	BULB# 16	DATE:9/23/2025
CUST. DESIGN#	QTY: 1	TYPE: E12 BA9	DRAWN BY:MZ 985
FIXTURE TYPE: CHANDELIER	WATTS:60	VOLTAGE:120	SCALE: 1:5
LENS COLOR:WB-3A (3"W X 6"H FROSTED CLEAR CYLINDER SHADE)	TOTAL AMPS:8	APPROVAL:	
METAL FINISH:072U Blackwash (127703)	LOCATION: DAMP	EST. WEIGHT:76.71 LBS	
MATERIAL:STEEL/ GLASS	NOTES:	SHEET: 2 OF 3	



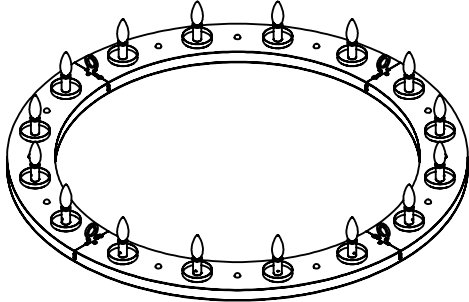
# CUSTOMER PROPOSAL / CUT SHEET

"A Commitment to Excellence in Lighting and Service"

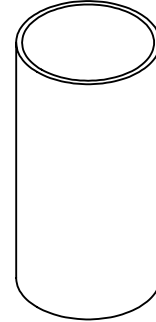
CALL OUR CUSTOMER SERVICE DEPARTMENT AT 1-800-222-4009  
MONDAY - FRIDAY 9:00a.m - 5:00p.m ET  
visit us on the web at [www.meyda.com](http://www.meyda.com)

REVISION:

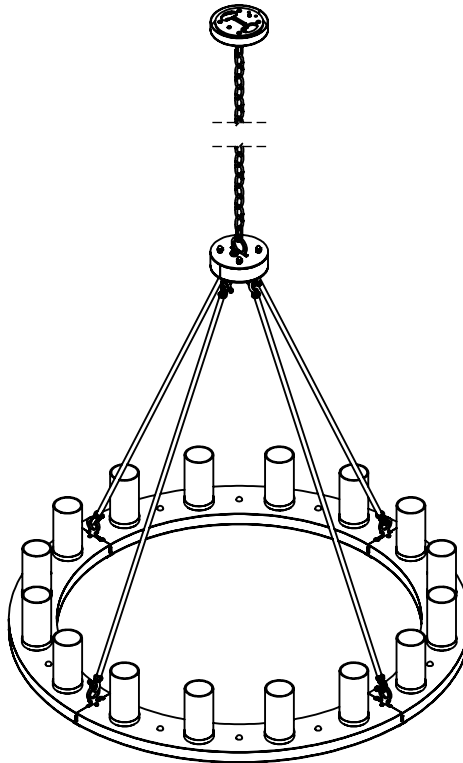
5.) 48" CHANDELIER RING



6.) GLASS SHADE



OVERALL



\*DIMENSIONS AND DETAILS ARE SUBJECT TO MODIFICATION DURING PRODUCTION  
© MEYDA TIFFANY INC © DESIGN COPYRIGHT, MEYDA TIFFANY, INC. ALL RIGHTS RESERVED, NO UNAUTHORIZED DUPLICATION

\*TRANSPARENT FINISHES WILL VARY DEPENDING ON THE MATERIAL TO WHICH IT IS APPLIED AND THE FABRICATION TECHNIQUE.



ID# 18742-44.16239A(221633)	W/O# 1519000	BULB# 16	DATE:9/23/2025
CUST. DESIGN#	QTY: 1	TYPE: E12 BA9	DRAWN BY:MZ 985
FIXTURE TYPE: CHANDELIER	WATTS:60	VOLTAGE:120	SCALE: 1:20
LENS COLOR:WB-3A (3"W X 6"H FROSTED CLEAR CYLINDER SHADE)	TOTAL AMPS:8	APPROVAL:	
METAL FINISH:072U Blackwash (127703)	LOCATION: DAMP	EST. WEIGHT:76.71 LBS	
MATERIAL:STEEL/ GLASS	NOTES:	SHEET: 3 OF 3	