

INSTALLATION INSTRUCTIONS

FOR ITEM 214353



CAUTION: FAILURE TO INSTALL THIS FIXTURE PROPERLY MAY RESULT IN SERIOUS PERSONAL INJURY OR DEATH AND PROPERTY DAMAGE. We recommend installation by a licensed electrician.

This product must be installed in accordance with applicable installation code(s), by a person familiar with the construction and operation of the product and the hazards involved.*

Caution: Do not exceed maximum wattage noted on fixture. Use only recommended bulbs with fixture.

FIXTURE COMPONENTS

1. SHADE
2. CANOPY/HUB
3. LONG ARMS (QTY: 2)
4. SHORT ARMS (QTY: 2)

Caution:

Fixture is OVERWEIGHT and not suitable for installation with standard Junction Box.

Be sure power is off at the main breaker box prior to installation.

Read all instructions in their entirety before beginning installation.

1. Carefully unpack all components and make certain that everything is on hand.
2. Unscrew acorn nuts and hex nuts from the canopy to release the mounting plate. Save these for later.
3. Using customer supplied hardware, affix the mounting plate directly to the ceiling ensuring the connection is suitable for 45 lbs. and that electrical supply wires remain accessible.
4. Lift the canopy and hub and reconnect to the mounting plate using the acorn nuts and hex nuts from before.
5. Unscrew phillips heads screws on the side of the canopy to release the wire access plate.
6. Following all local codes and procedures, make electrical wire connections from the supply wires to the fixture lead wires.
7. Grab short arms and hook onto the loops on the ends of the hub.
8. Grab long arms and hook onto the loops on the middle of the hub.
9. Lift frame and hook ends of the arms to the loops on the frame.
10. Install 6x 60W E26 A19 Bulbs (not included) into sockets.
11. Power on and ENJOY!



INSTALLATION INSTRUCTIONS

"A Commitment to Excellence in Lighting and Service"

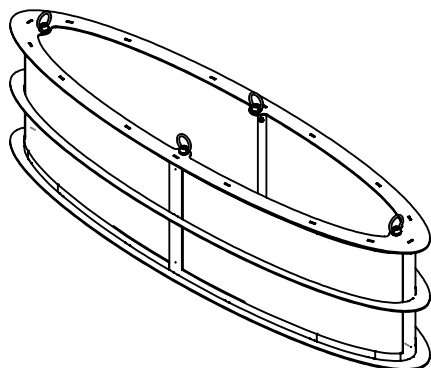
CALL OUR CUSTOMER SERVICE DEPARTMENT AT 1-800-222-4009

MONDAY - FRIDAY 9:00a.m - 5:00p.m ET

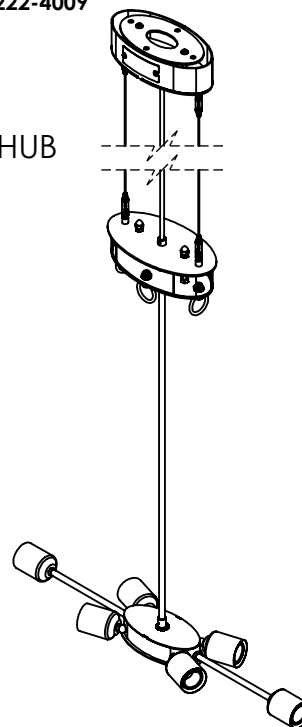
visit us on the web at www.meyda.com

REVISION:

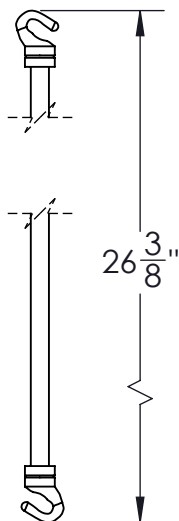
1) SHADE



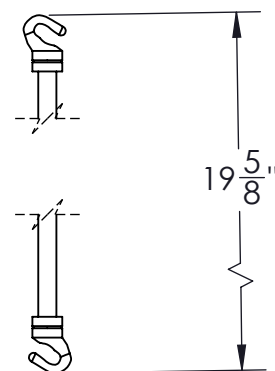
2) CANOPY/HUB



3) LONG ARMS (QTY: 2)



4) SHORT ARMS (QTY: 2)



*DIMENSIONS AND DETAILS ARE SUBJECT TO MODIFICATION DURING PRODUCTION
© MEYDA TIFFANY INC © DESIGN COPYRIGHT, MEYDA TIFFANY, INC. ALL RIGHTS RESERVED, NO UNAUTHORIZED DUPLICATION

*TRANSPARENT FINISHES WILL VARY DEPENDING ON THE MATERIAL TO WHICH IT IS APPLIED AND THE FABRICATION TECHNIQUE.



| | | |
|---|----------------|----------------------|
| ID# 736-1514(214353) | BULB# 6 | DATE:11/7/2025 |
| CUST. DESIGN# | TYPE: E26 A19 | (BULBS NOT INCLUDED) |
| FIXTURE TYPE: PENDANT | WATTS:60 | VOLTAGE:120 |
| LENS COLOR:113676 ANGELWING IDALIGHT(FROSTED OUT) | TOTAL AMPS:3 | SCALE: 1:16 |
| METAL FINISH:3TB TIMELESS BRONZE (106391) | LOCATION: DAMP | APPROVAL: |
| MATERIAL:STEEL/ ACRYLIC | NOTES: | EST. WEIGHT:37.48 |
| | | SHEET: 2 OF 2 |