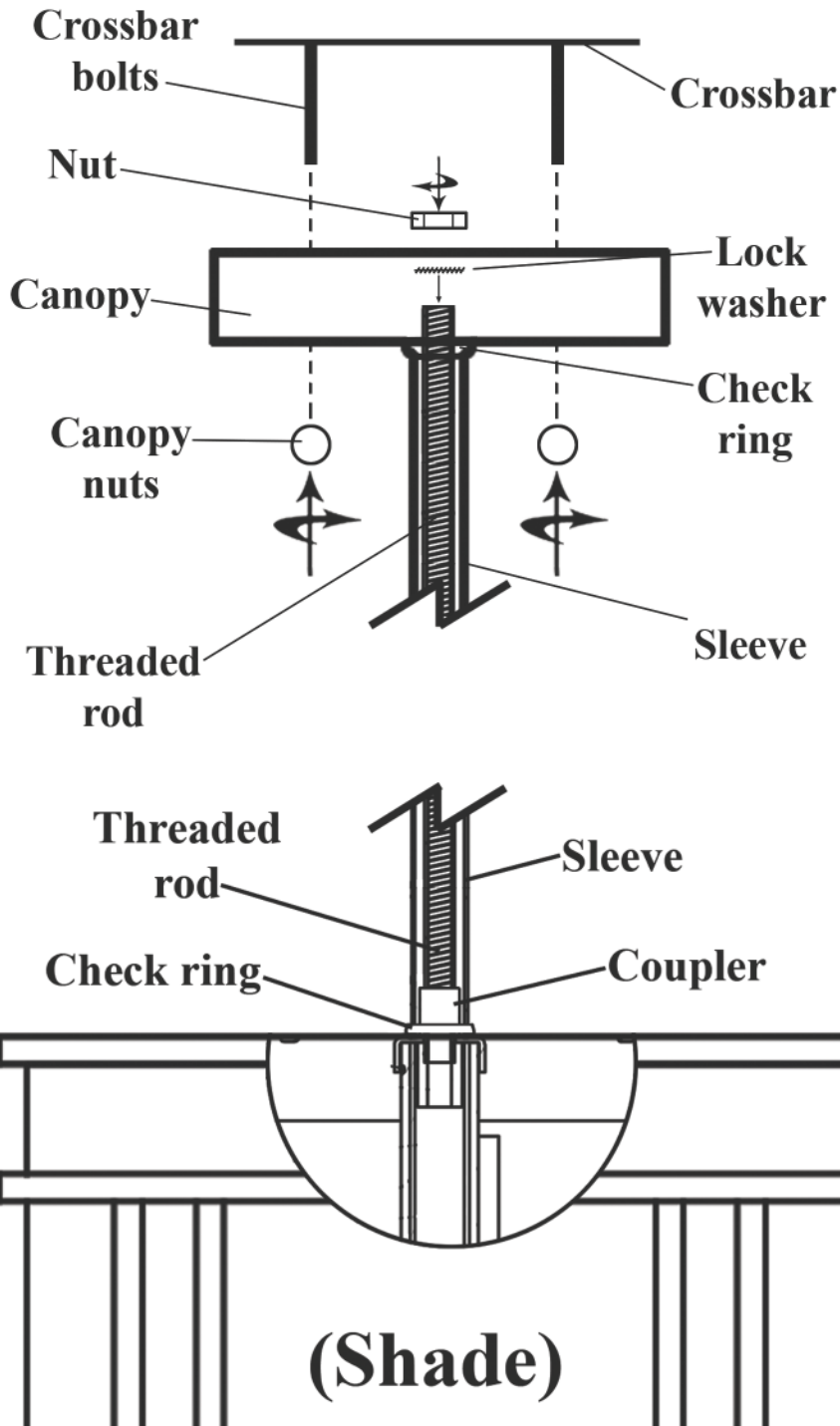


ASSEMBLY INSTRUCTIONS FOR #186562



IMPORTANT

TURN OFF THE POWER AT THE MAIN FUSE OR
CIRCUIT BREAKER BOX BEFORE STARTING
INSTALLATION

CAREFULLY UNPACK AND IDENTIFY ALL
PARTS BEFORE ASSEMBLY. BULBS ARE NOT
INCLUDED

- 1.) Assemble your fixture: Run your electrical wire through the threaded rod. Screw threaded rod into the coupler located on top and center of shade. Place check ring (open side up) onto threaded rod so that it slides down to meet shade. Place sleeve onto threaded rod, cap the rod/sleeve off with another check ring. Place canopy on top of check ring/sleeve. Secure together by placing the lock washer onto top of threaded rod (within canopy), and screw nut onto threaded rod.
- 2.) Connect crossbar to ceiling or J-Box. Be sure there is two crossbar bolts pointing down ready to receive canopy.
- 3.) Raise fixture to ceiling, connect electrical wires as per your local electrical code. The driver will connect to shade's LED by matching red to white, & black to black. Connect other side of driver as per your local code: hot & neutral is labeled on driver.
- 4.) Slide canopy up onto the two crossbar bolts, secure canopy flush to ceiling by screwing the two canopy nuts onto the crossbar bolts.
- 5.) Power on, enjoy your new fixture!



"A Commitment to Excellence in Lighting and Service"

CALL OUR CUSTOMER SERVICE DEPARTMENT AT 1-800-222-4009

MONDAY - FRIDAY 8:00a.m - 6:00p.m ET

visit us on the web at www.meyda.com