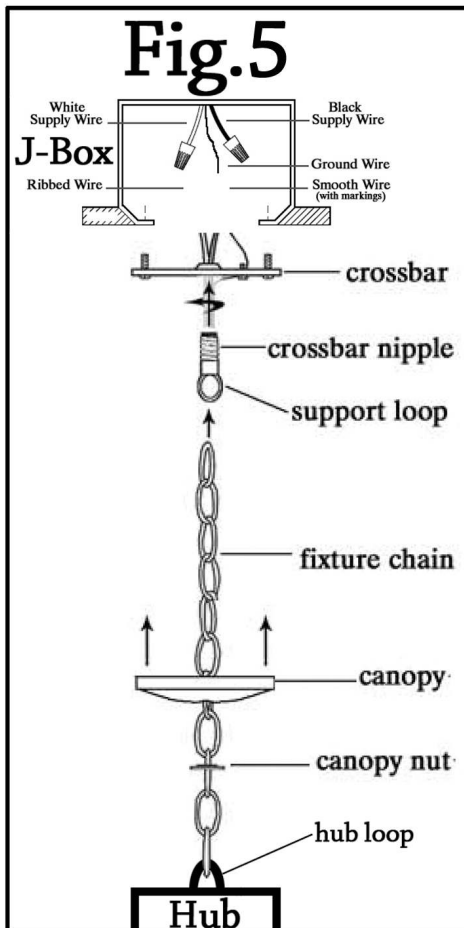
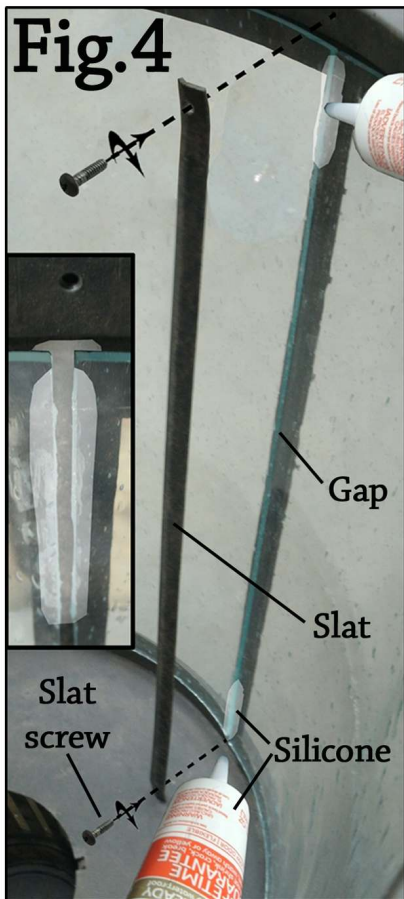


ASSEMBLY INSTRUCTIONS FOR #172344



IMPORTANT

TURN OFF THE POWER AT THE MAIN FUSE OR CIRCUIT BREAKER BOX BEFORE STARTING INSTALLATION

CAREFULLY UNPACK AND IDENTIFY ALL PARTS BEFORE ASSEMBLY. BULBS ARE NOT INCLUDED

Install glass:

- 1.) Turn your shade upside down and place on a surface that will accommodate the hub of the shade, for example a bucket. You will want it low enough to install glass. Also be sure that you add cushion to the bucket so that you do not damage the finish. (Fig.1)
- 2.) Each piece of glass is numbered to correspond to a number placed within the shade frame. (Fig.2) Once you are sure of the match and no chance of mix up, peel the numbers off. Carefully place the glass one at a time into position. To place just right you may want to sandwich the glass with your hands in the center of the glass. (Fig.3) Once you have them all in position, apply silicone to the tops and bottoms of the gaps between glass pieces. Immediately place slats onto the gaps and secure in place with the screws provided. (Fig.4) You want them snug not overly tight. Do not over tighten. Flip shade over to allow curing time in the shade's natural position. Allow to cure overnight.

Steps 3-9 see Fig.5

3. Attach crossbar nipple with support loop to crossbar.
4. Attach crossbar to j box.
5. Attach fixture chain to hub loop.
6. Place canopy nut than canopy on to fixture chain as shown.
7. Attach fixture chain to support loop.
8. Wire as per local electrical code.
9. Slide canopy up to ceiling, screw canopy nut onto crossbar nipple and tighten to canopy.



"A Commitment to Excellence in Lighting and Service"

CALL OUR CUSTOMER SERVICE DEPARTMENT AT 1-800-222-4009

MONDAY - FRIDAY 8:00a.m - 6:00p.m ET

visit us on the web at www.meyda.com