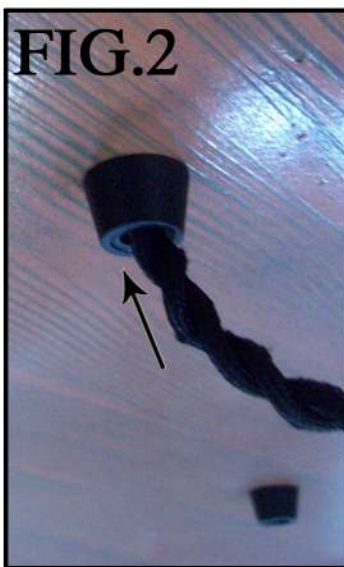


# ASSEMBLY INSTRUCTIONS FOR # 165838

## FIG.1



### IMPORTANT

TURN OFF THE POWER AT THE MAIN FUSE OR CIRCUIT BREAKER BOX BEFORE STARTING INSTALLATION

CAREFULLY UNPACK AND IDENTIFY ALL PARTS BEFORE ASSEMBLY. BULBS ARE NOT INCLUDED

- 1.) Attach your cross bar with nipple to your ceiling. (Fig.1)
- 2.) Prepare your fixture for the ceiling by inserting the twisted wires into the black tapered caps. (Fig.2)  
Decide on the height that you want your sockets to hang, and secure in place with supplied zip ties. (Fig.3) Zip tight.
- 3.) Connect all wires as per local codes.
- 4.) Slide canopy onto nipple, and secure in place with ball finial. (Fig.1)
- 5.) Bulb your fixture, power on, enjoy your new fixture!
- 6.) HAVE A MEYDA FINE DAY!



*"A Commitment to Excellence in Lighting and Service"*

CALL OUR CUSTOMER SERVICE DEPARTMENT AT 1-800-222-4009

MONDAY - FRIDAY 8:00 a.m. - 6:00 p.m. ET

visit us on the web at [www.meyda.com](http://www.meyda.com)