

# INSTALLATION INSTRUCTIONS

FOR ITEM 162981



**CAUTION: FAILURE TO INSTALL THIS FIXTURE PROPERLY MAY RESULT IN SERIOUS PERSONAL INJURY OR DEATH AND PROPERTY DAMAGE.** We recommend installation by a licensed electrician.

This product must be installed in accordance with applicable installation code(s), by a person familiar with the construction and operation of the product and the hazards involved.\*

**Caution:** Do not exceed maximum wattage noted on fixture. Use only recommended bulbs with fixture.

## FIXTURE COMPONENTS

1. MOUNTING PLATE
2. CANOPY COVER
3. HEMISPHERE COVER
4. STEM W/ 2X SLIP RINGS & CHECK RING
5. RUNNING THREAD
6. FRAME
7. GLASS GLOBE X2

### ***Caution:***

***Be sure power is off at the main breaker box prior to installation.  
Read all instructions in their entirety before beginning installation.***

1. Carefully unpack all components and make certain that everything is on hand.
2. Take Running Thread and screw in the coupling attached to Frame, carefully running the Lead wires from fixture up the running thread.
3. Slide over one of the Hemisphere Cover over the running thread (See next pages for correct orientation).
4. Slide over Stem over Running thread and passing it through the Hemisphere cover from before, slide over both the Slip rings on to Stem.
5. Secure the Hemisphere cover using one of the Slip ring.
6. Slide other Hemisphere cover, Canopy cover and rest the check ring on Stem.
7. Attach the Running Thread to Mounting plate using supplied Hex nuts X2
8. Using customer supplied hardware, affix Mounting plate to blocking in ceiling ensuring that connection is suitable to hold a minimum of 20Lbs and that electrical supply wires remain accessible.
9. Following all local codes and procedures, make electrical connections from fixture lead wires to supply wires.
10. Slide Canopy cover & Hemisphere cover up and secure using other Slip ring.
11. Install 2X E26 A19 60 watts Max. bulbs (not included) onto Sockets.
12. Place the Glass Globes into fitter and secure using screws provided on fitter.
13. Power on and ENJOY!!



# INSTALLATION INSTRUCTIONS

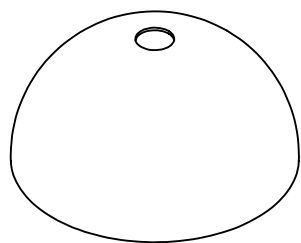
REVISION:

"A Commitment to Excellence in Lighting and Service"

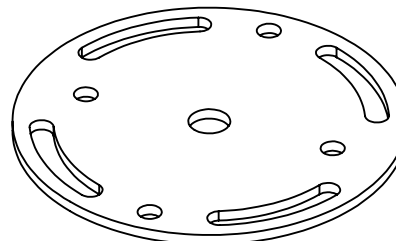
CALL OUR CUSTOMER SERVICE DEPARTMENT AT 1-800-222-4009

MONDAY - FRIDAY 9:00a.m - 5:00p.m ET

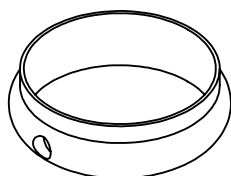
visit us on the web at [www.meyda.com](http://www.meyda.com)



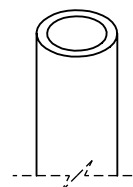
HEMISPHERE  
COVER X2



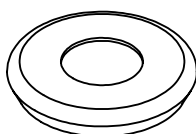
MOUNTING PLATE



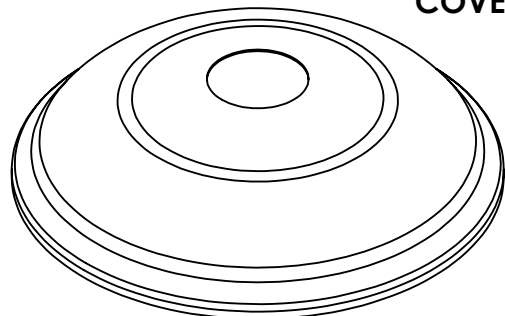
SLIP RING W/SET  
SCREW X2



STEM



CHECK RING



CANOPY  
COVER



RUNNING THREAD



\*DIMENSIONS AND DETAILS ARE SUBJECT TO MODIFICATION DURING PRODUCTION  
© MEYDA TIFFANY INC © DESIGN COPYRIGHT, MEYDA TIFFANY, INC. ALL RIGHTS RESERVED, NO UNAUTHORIZED DUPLICATION



\*TRANSPARENT FINISHES WILL VARY DEPENDING ON THE MATERIAL TO WHICH IT IS APPLIED AND THE FABRICATION TECHNIQUE.

ID# S20141-1(162981)	W/O# 1519669	BULB# 2	DATE:10/2/2025
CUST. DESIGN#	QTY: 3	TYPE: E26 A19	DRAWN BY:TP1063
FIXTURE TYPE: PENDANT	WATTS:60	VOLTAGE:120	SCALE: 1:2
LENS COLOR:50-153 (10" DIA WHITE GLASS GLOBE WITH 4" FITTER)	TOTAL AMPS: 1	APPROVAL:	
METAL FINISH:3ORBBRZ OIL RUBBED BRONZE (106397)	LOCATION: DAMP	EST. WEIGHT:	
MATERIAL:STEEL/ GLASS	NOTES:	SHEET: 2 OF 4	



# INSTALLATION INSTRUCTIONS

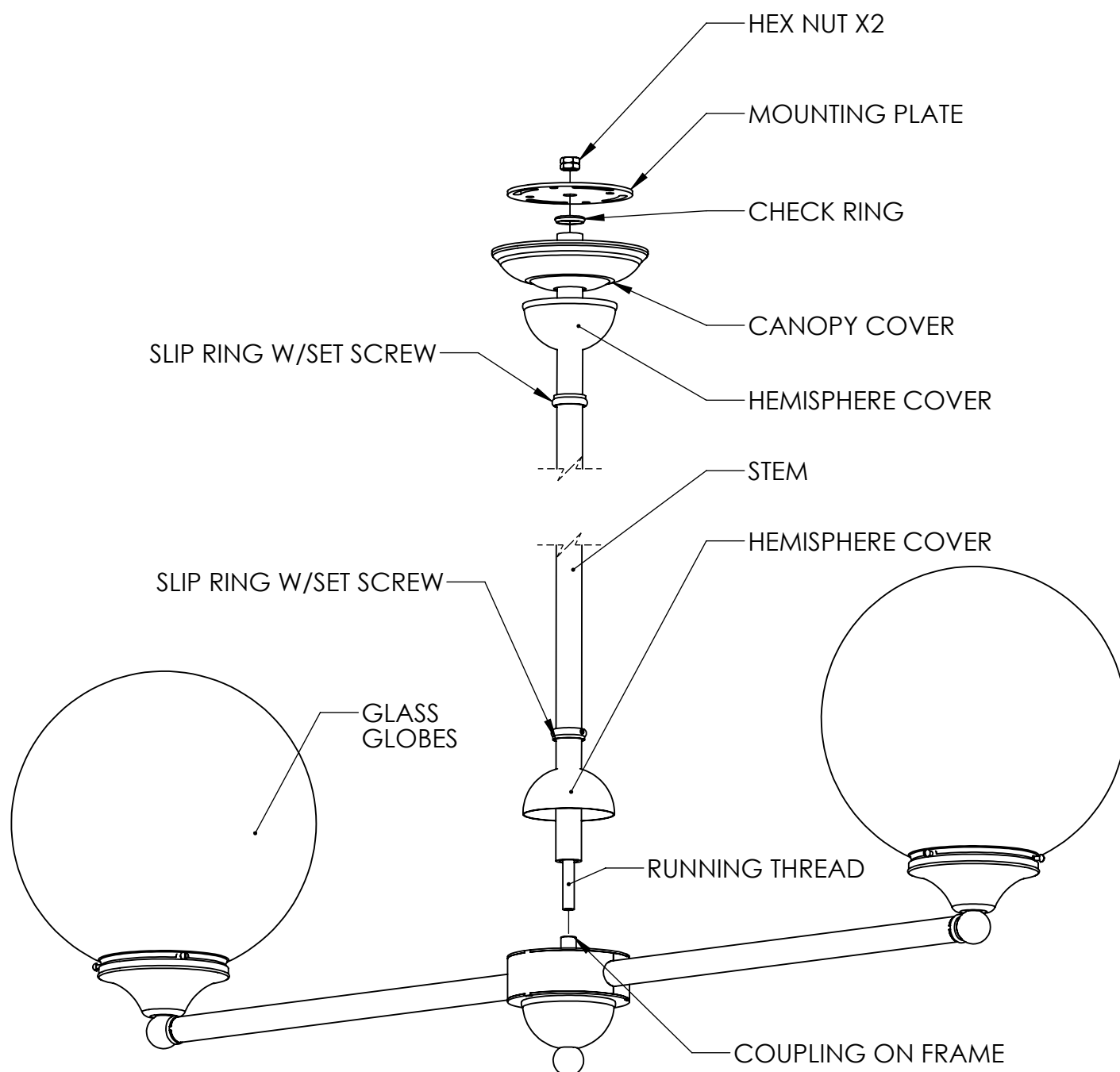
"A Commitment to Excellence in Lighting and Service"

CALL OUR CUSTOMER SERVICE DEPARTMENT AT 1-800-222-4009

MONDAY - FRIDAY 9:00a.m - 5:00p.m ET

visit us on the web at [www.meyda.com](http://www.meyda.com)

REVISION:



\*DIMENSIONS AND DETAILS ARE SUBJECT TO MODIFICATION DURING PRODUCTION  
© MEYDA TIFFANY INC © DESIGN COPYRIGHT, MEYDA TIFFANY, INC. ALL RIGHTS RESERVED, NO UNAUTHORIZED DUPLICATION

\*TRANSPARENT FINISHES WILL VARY DEPENDING ON THE MATERIAL TO WHICH IT IS APPLIED AND THE FABRICATION TECHNIQUE.



ID# S20141-1(162981)	W/O# 1519669	BULB# 2	DATE:10/2/2025
CUST. DESIGN#	QTY: 3	TYPE: E26 A19	DRAWN BY:TP1063
FIXTURE TYPE: PENDANT	WATTS:60	VOLTAGE:120	SCALE: 1:5
LENS COLOR:50-153 (10" DIA WHITE GLASS GLOBE WITH 4" FITTER)	TOTAL AMPS: 1	APPROVAL:	
METAL FINISH:3ORBBRZ OIL RUBBED BRONZE (106397)	LOCATION: DAMP	EST. WEIGHT:	
MATERIAL:STEEL/ GLASS	NOTES:	SHEET: 3 OF 4	



# INSTALLATION INSTRUCTIONS

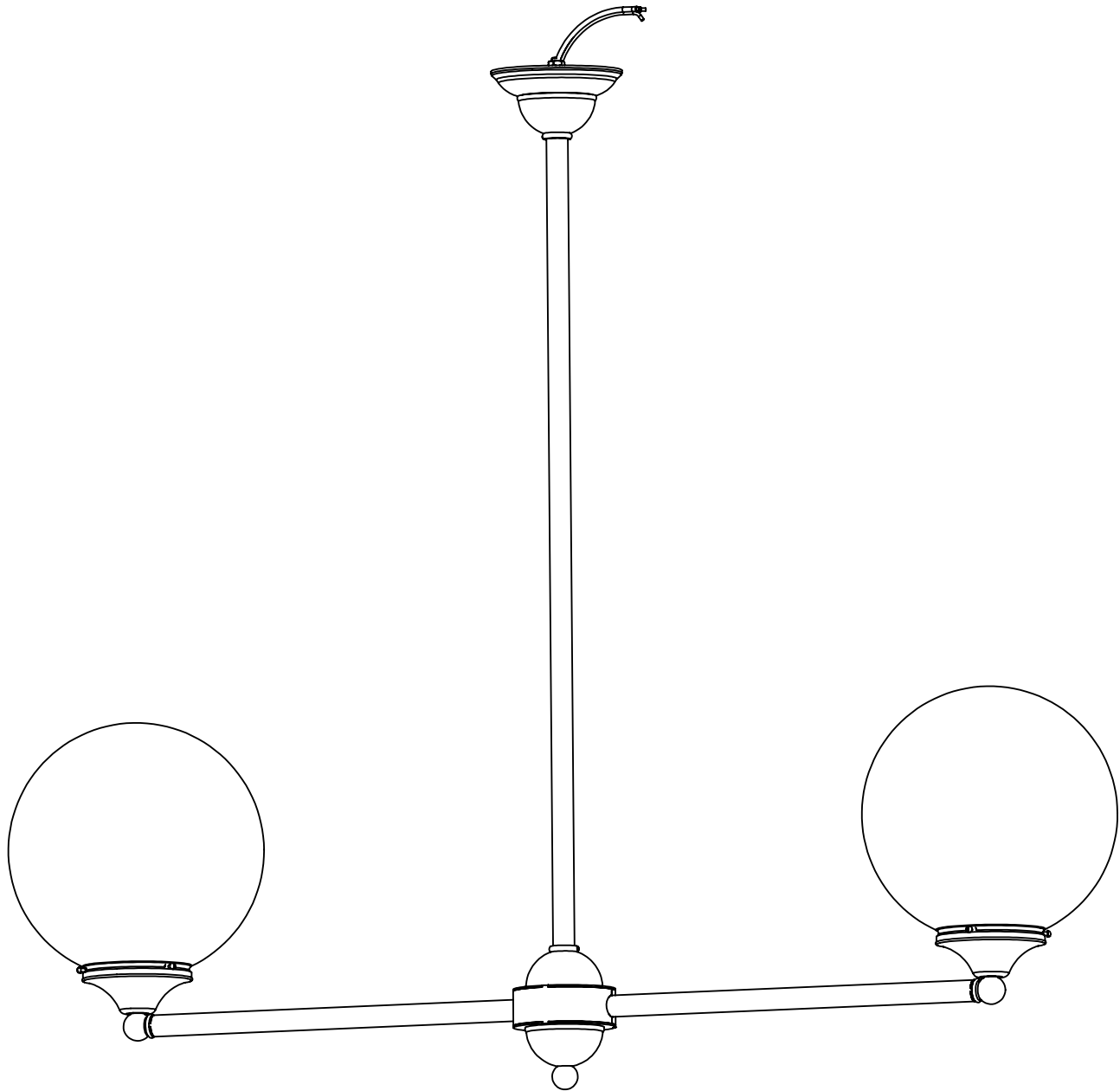
REVISION:

"A Commitment to Excellence in Lighting and Service"

CALL OUR CUSTOMER SERVICE DEPARTMENT AT 1-800-222-4009

MONDAY - FRIDAY 9:00a.m - 5:00p.m ET

visit us on the web at [www.meyda.com](http://www.meyda.com)



OVERALL



\*DIMENSIONS AND DETAILS ARE SUBJECT TO MODIFICATION DURING PRODUCTION  
© MEYDA TIFFANY INC © DESIGN COPYRIGHT, MEYDA TIFFANY, INC. ALL RIGHTS RESERVED, NO UNAUTHORIZED DUPLICATION



\*TRANSPARENT FINISHES WILL VARY DEPENDING ON THE MATERIAL TO WHICH IT IS APPLIED AND THE FABRICATION TECHNIQUE.

ID# S20141-1(162981)	W/O# 1519669	BULB# 2	DATE:10/2/2025
CUST. DESIGN#	QTY: 3	TYPE: E26 A19	DRAWN BY:TP1063
FIXTURE TYPE: PENDANT	WATTS:60	VOLTAGE:120	SCALE: 1:6.5
LENS COLOR:50-153 (10" DIA WHITE GLASS GLOBE WITH 4" FITTER)	TOTAL AMPS: 1	APPROVAL:	
METAL FINISH:3ORBBRZ OIL RUBBED BRONZE (106397)	LOCATION: DAMP	EST. WEIGHT:	
MATERIAL:STEEL/ GLASS	NOTES:	SHEET: 4 OF 4	