

INSTALLATION INSTRUCTIONS

FOR ITEM 160496

Meyda
CUSTOM LIGHTING

CAUTION: FAILURE TO INSTALL THIS FIXTURE PROPERLY MAY RESULT IN SERIOUS PERSONAL INJURY OR DEATH AND PROPERTY DAMAGE. We recommend installation by a licensed electrician.

This product must be installed in accordance with applicable installation code(s), by a person familiar with the construction and operation of the product and the hazards involved.*

Caution: Do not exceed maximum wattage noted on fixture. Use only recommended bulbs with fixture.

FIXTURE COMPONENTS

1. CANOPY W/ MOUNTING PLATE
2. BARREL SHADE

Caution:

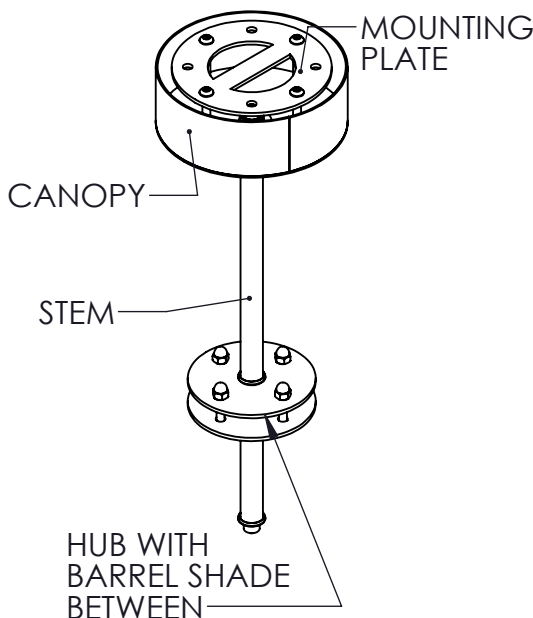
Fixture is OVERWEIGHT and not suitable for installation with standard Junction Box.

Be sure power is off at the main breaker box prior to installation.

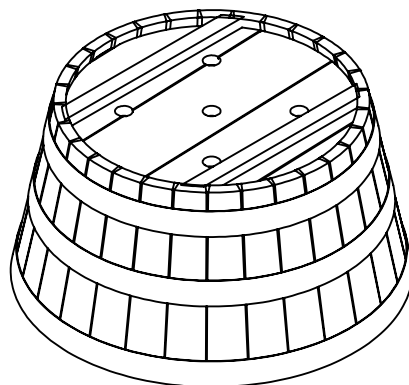
Read all instructions in their entirety before beginning installation.

1. Carefully unpack all components and make certain that everything is on hand.
2. Unscrew Acorn Nuts on the bottom of the Canopy to release Mounting Plate.
3. Using Customer Supplied Hardware, affix Mounting Plate to blocking in ceiling ensuring that connection is suitable to hold a minimum of 35 lbs and that Electrical Supply Wires remain accessible.
4. Unscrew Cap on Canopy to remove Wire Access Panel. (keep for later)
5. Unravel wire at top of Canopy and make sure it is accessible through the Wire Access Port.
6. Carefully lift fixture to ceiling, aligning holes in Canopy to screws in Mounting Plate.
7. Secure the Canopy to The Mounting Plate using Acorn Nuts from earlier.
8. Using the Wire Access Port and following all Local Codes and Procedures, make Electrical Connections from Fixture Lead Wires to Supply Wires.
9. Reattach the Wire Access Panel using the Cap from before.
10. Install 4X 60 WATT E26 A19 bulbs (not included) into sockets.
11. Power on and ENJOY!!!

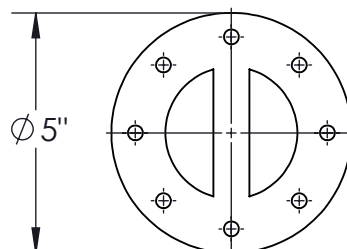
1. CANOPY W/ MOUNTING PLATE



2. BARREL SHADE



MOUNTING DETAIL



OVERALL

