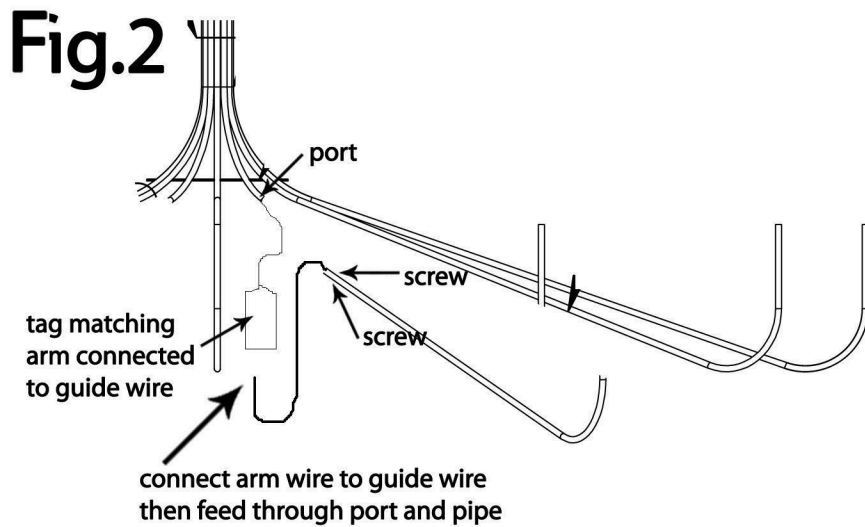
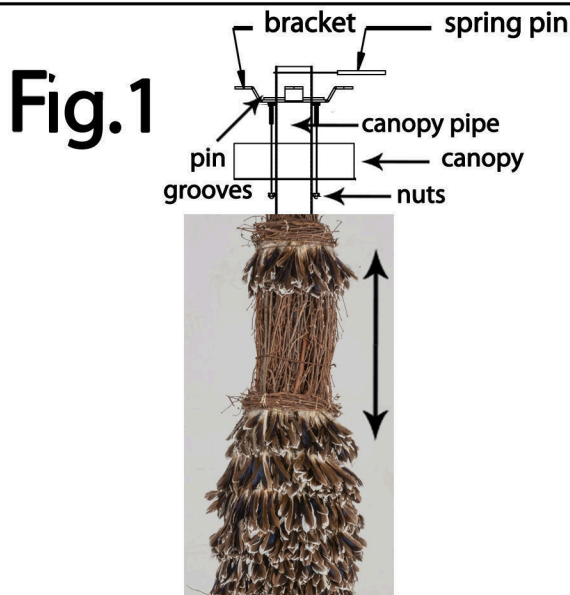


ASSEMBLY INSTRUCTIONS FOR #157699



THIS FIXTURE WEIGHS OVER 50 LBS.
NEC:314.27B, A luminaire that weighs more than 23kg (50lb) shall be supported independently of the outlet box unless the outlet box is listed AND MARKED for the MAXIMUM weight to be supported.

IMPORTANT

TURN OFF THE POWER AT THE MAIN FUSE OR CIRCUIT BREAKER BOX BEFORE STARTING INSTALLATION

CAREFULLY UNPACK AND IDENTIFY ALL PARTS BEFORE ASSEMBLY. BULBS ARE NOT INCLUDED

1.ATTACHING SMALLER PIPE W/CANOPY: Slide vine bundle and canopy down about 6". Insert pipe into canopy bracket,run spring pin through the two holes at the top of pipe. Pipe should rest into pin grooves. Secure bracket to ceiling, and connect wires as per local codes. Slide canopy up to bracket and attach nuts to secure canopy in place. Very important: do not cut wires w/pin when inserting through pipes. Slide vines back up to canopy. Seen in fig.1

2.ATTACHING ARMS TO MAIN SHAFT: Each arm is labeled to match an arm port. Attach ground-wire arm lower tier first. Find matching tag, remove tag from guide wire, cut off any kinks at the end of the guide wire, and attach arm wire & ground very securely to guide wire. Now one person feeds wire into port while another pulls from top. MORE PUSH THAN PULL!! Once wire is through all the way, insert arm into port and secure w/set screws on top & bottom of arm. Attach upper tier ground arm in the same manner as the lower. It would be best to attach all the upper tier arms first and then the lower w/ the exception of lower ground arm. Upper tier arms attach by lifting into place, insert into port (you may have to push some of the wire up into port) and secure with the 2 screws. With exception of ground arm that is not attached. Lower tier arms placed in the same manner as the first lower ground arm. Once all arms are attached you should have 12 black wires & 6 brown wires coming out of the top of main shaft (separating upper and lower tiers).



"A Commitment to Excellence in Lighting and Service"

CALL OUR CUSTOMER SERVICE DEPARTMENT AT 1-800-222-4009

MONDAY - FRIDAY 8:00 a.m. - 6:00 p.m. ET

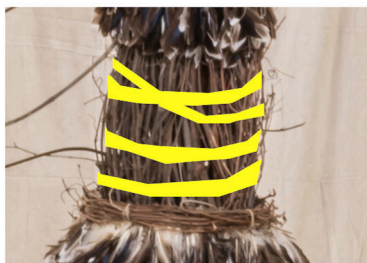
visit us on the web at www.meyda.com

ASSEMBLY INSTRUCTIONS FOR #157699

Fig.4
tie w/strap



tightly



tie w/wire,
remove strap

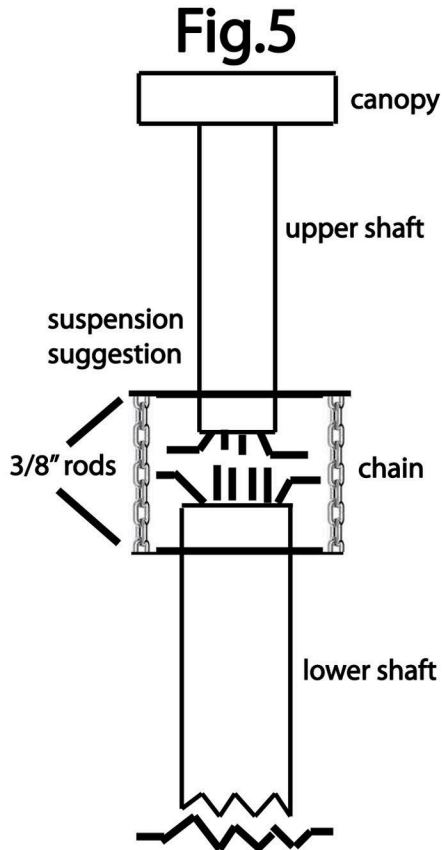
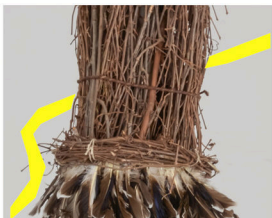
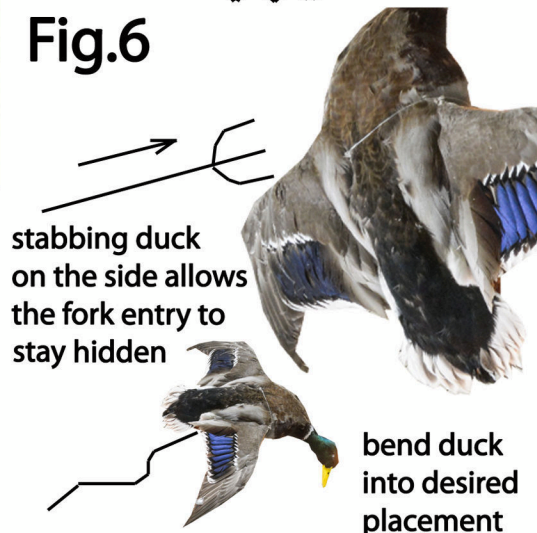


Fig.6



THIS FIXTURE WEIGHS OVER 50 LBS.
NEC:314.27B, A luminaire that weighs more than 23kg (50lb) shall be supported independently of the outlet box unless the outlet box is listed AND MARKED for the MAXIMUM weight to be supported.

IMPORTANT

TURN OFF THE POWER AT THE MAIN FUSE OR CIRCUIT BREAKER BOX BEFORE STARTING INSTALLATION

CAREFULLY UNPACK AND IDENTIFY ALL PARTS BEFORE ASSEMBLY. BULBS ARE NOT INCLUDED

3.CONNECT ARMS TO EACH OTHER: Using the rods that shoot out of the arms make them overlap by about an inch. Holding the 2 rods together slip on the u-bolts provided and fasten securely with the 2 nuts. Seen in Fig 3.

4.ATTACHING MAIN SHAFT TO CANOPY SHAFT: You will need to suspend main shaft just below canopy shaft(one suggested way is to use two 3/8" solid rods, one through upper shaft and one through lower shaft then connect the two rods with heavy chain on both sides), leaving enough room to connect the wires. Seen in Fig.5.

Connect wires as per local codes split as evenly as possible. Once wires are connected, connect main shaft and canopy shaft together by lining up holes and inserting the second spring pin. By this time the vines from the two shafts will be meshed together.

5. FINISHING TOUCHES: By this time your fixture is fully suspended and wired. On each arm is some fanning vines, you will spread them apart to blanket across the tiers. The extra fanning will be jammed, sharp ends first, up under the main shafts cascading vines (just above the arm ports). These fanning steps may be completed before suspending the main shaft. The last step will be to take the ends of the two shafts meshed together and wrap a strap around it very tightly. (ratchet straps work very well). This is to bring in the flared pieces of vine for a more straight natural look. Once wrapped you will take the brown wire provided, cut into two pieces, and tie the meshed vines tightly, once tied you can slip the strap out from the wire ties. Seen in Fig. 4.

6. DUCK PLACEMENT: Grasp duck firmly with both hands, and push onto forked rod. Now you may adjust duck by bending rod. If using the fork, cut off fishing wire. Use the fishing wire to hang where you see fit. See Fig.6



"A Commitment to Excellence in Lighting and Service"

CALL OUR CUSTOMER SERVICE DEPARTMENT AT 1-800-222-4009

MONDAY - FRIDAY 8:00 a.m. - 6:00 p.m. ET

visit us on the web at www.meyda.com