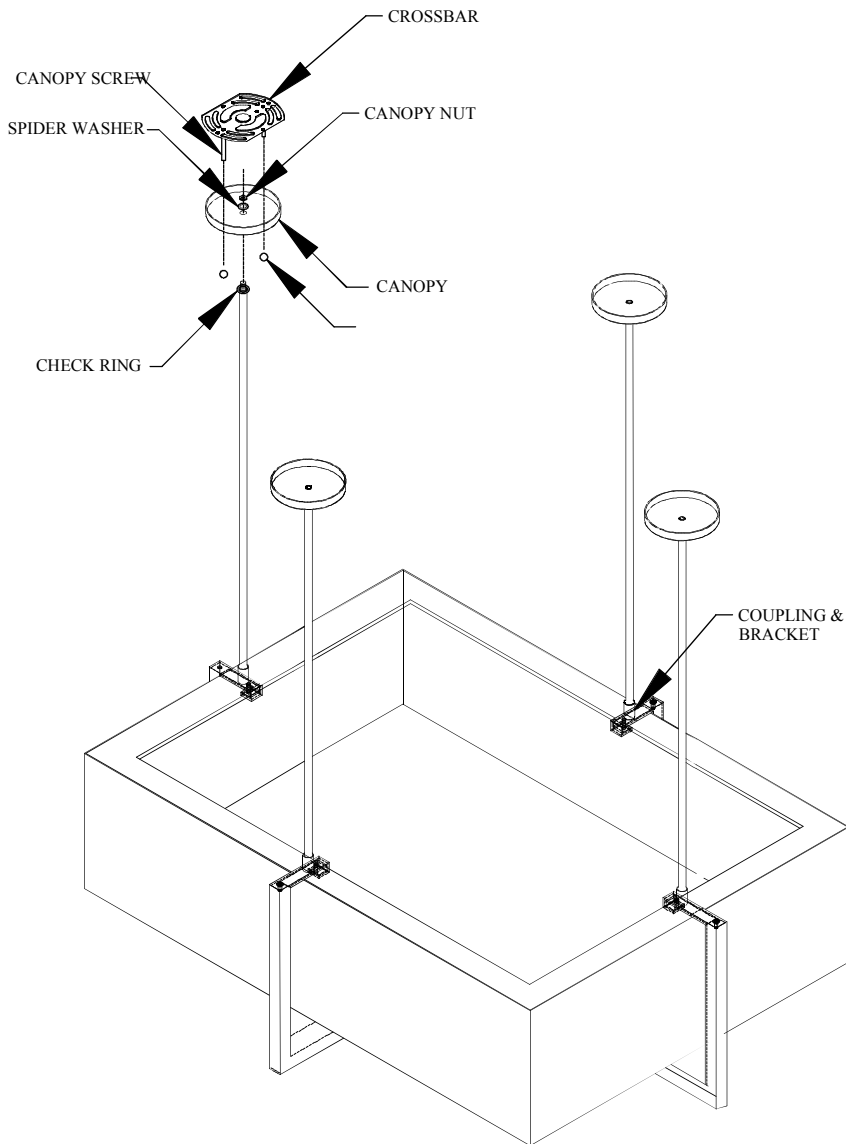


ASSEMBLY INSTRUCTIONS FOR #212632-22

CH 7



IMPORTANT

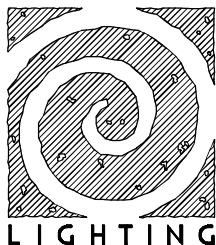
TURN OFF THE POWER AT THE MAIN FUSE OR
CIRCUIT BREAKER BOX BEFORE STARTING
INSTALLATION

CAREFULLY UNPACK AND IDENTIFY ALL
PARTS BEFORE ASSEMBLY. BULBS ARE NOT
INCLUDED

THIS IS A TWO PERSON JOB

- 1.) CUT DOWN RODS AND ALL-THREAD TO LENGTH MAKING SURE TO NOT DAMAGE THREADS.
- 2.) SCREW ALL-THREAD INTO COUPLINGS LOCATED ON TOP OF THE FIXTURE BRACKETS AND TIGHTEN SECURELY. SLIDE DOWN RODS OVER ALL-THREAD.
- 3.) PLACE ROUND CHECK RINGS AND CANOPIES OVER ALL-THREAD. PLACE SPIDER WASHERS AND NUTS. TIGHTEN SECURELY.
- 4.) FASTEN CROSSBARS TO A SECURE LOCATION WITH FASTENERS PROVIDED BY OTHERS.
- 5.) WHILE SUPPORTING FIXTURE, LINE UP PROVIDE CANOPY SCREWS AND FASTEN SECURELY WITH BALL NUTS PROVIDED.

2ND AVE™



"A Commitment to Excellence in Lighting and Service"

CALL OUR CUSTOMER SERVICE DEPARTMENT AT 1-800-843-1602

MONDAY - FRIDAY 8:00a.m - 6:00p.m ET

visit us on the web at www.2ndave.com