

CH 1

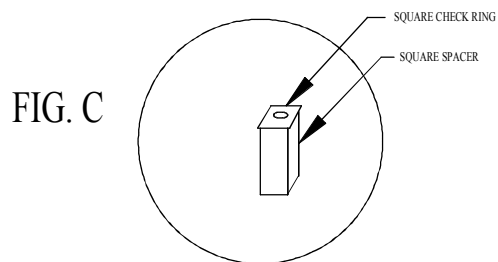
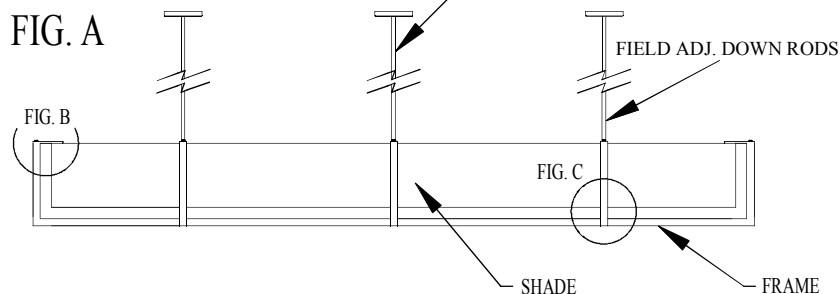


FIG. D

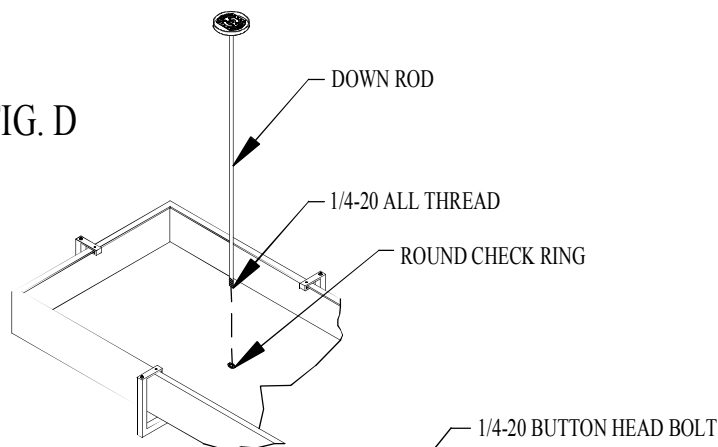
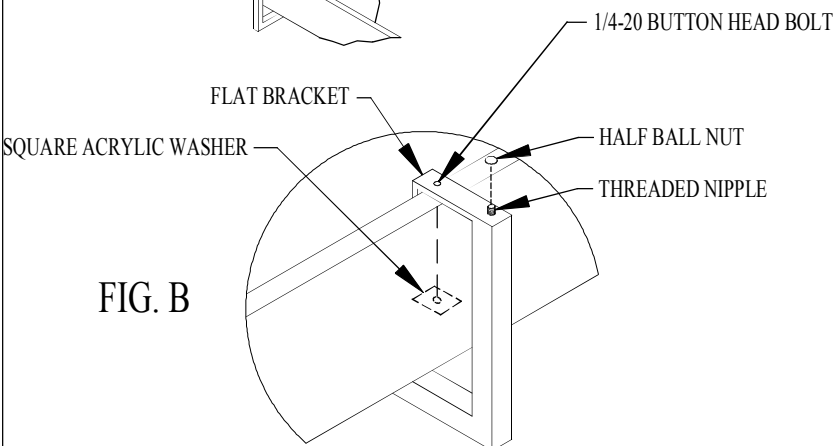


FIG. B



IMPORTANT

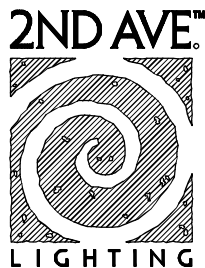
TURN OFF THE POWER AT THE MAIN FUSE OR CIRCUIT BREAKER BOX BEFORE STARTING INSTALLATION

CAREFULLY UNPACK AND IDENTIFY ALL PARTS BEFORE ASSEMBLY. BULBS ARE NOT INCLUDED

THIS FIXTURE WEIGHS OVER 50 LBS. NEC:314.27B, A luminaire that weighs more then 23kg (50lb) shall be supported independently of the outlet box unless the outlet box is listed AND MARKED for the MAXIMUM weight supported.

THIS INSTALLATION REQUIRES TWO PEOPLE

- 1.) DETERMINE OVERALL HEIGHT OF FIXTURE.
- 2.) **IMPORTANT: THE DOWN ROD MARKED CENTER IS 1/4" SHORTER AND MUST BE CUT ACCORDINGLY. CUT THE SAME AMOUNT OFF 1/4-20 ALL-THREAD AND DOWN ROD. MAKING SURE NOT TO DAMAGE THREADS FIG. C.**
- 3.) SET THREE (3) SQUARE SPACERS OVER THREADED HOLES IN FIXTURE FRAME. FOLLOWED BY 3 SQUARE CHECK RINGS SET ON TOP OF SPACERS.
- 4.) WRAP A SMALL AMOUNT OF BLUE PAINTERS TAPE AROUND SPACER AND FRAME TO HOLD SPACERS AND RINGS IN PLACE.
- 5.) PLACE SHADE INTO FRAME LINING UP HOLES IN SHADE WITH SPACERS.
- 6.) SLIDE DOWN RODS OVER THREADED PIPES. PLACE ROUND CHECK RINGS OVER HOLES AND PUSH ROD ASSEMBLIES THROUGH BLUE TAPE AND SECURELY FASTEN INTO FRAME FIG D.
- 7.) PLACE FLAT BRACKETS OVER NIPPLES FIG. B
- 8.) FASTEN LOOSELY WITH HALF BALL NUTS.
- 9.) PLACE 1/4-20 BUTTON HEAD BOLT THROUGH BRACKET AND SHADE. PLACE SQUARE ACRYLIC WASHER AND SCREW ACORN NUTS ON TO BOLTS. TIGHTEN ALL FASTENERS SECURELY
- 10.) CLEAN TAPE FROM FRAME AND SHADE.



"A Commitment to Excellence in Lighting and Service"

CALL OUR CUSTOMER SERVICE DEPARTMENT AT 1-800-843-1602

MONDAY - FRIDAY 8:00a.m - 6:00p.m ET

visit us on the web at www.2ndave.com