

FIG. A

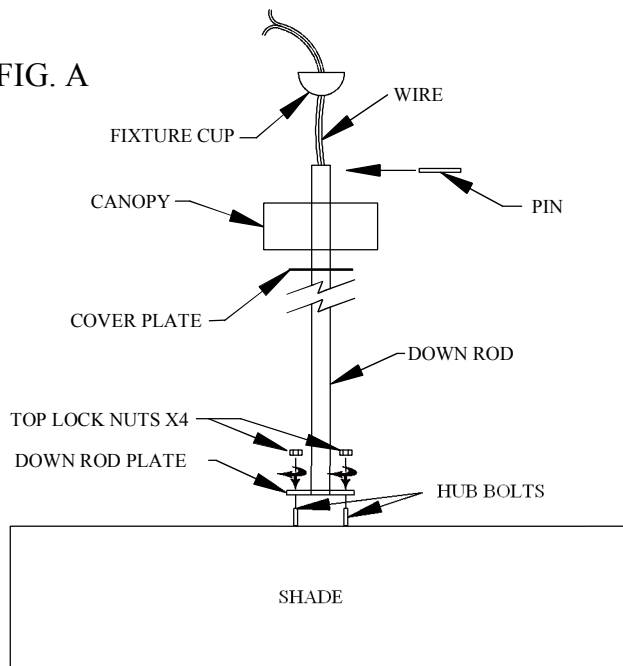


FIG. B

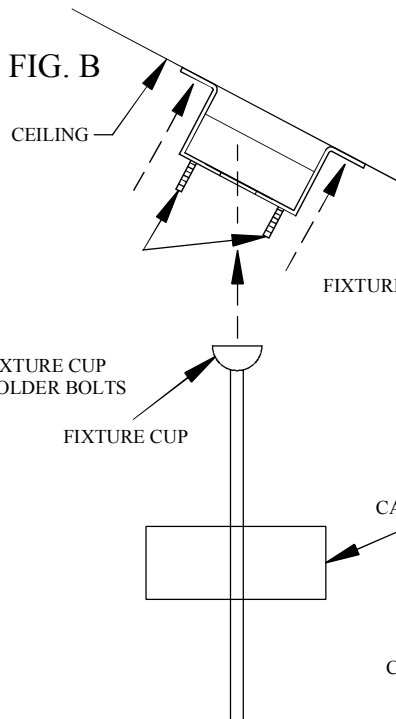


FIG. C

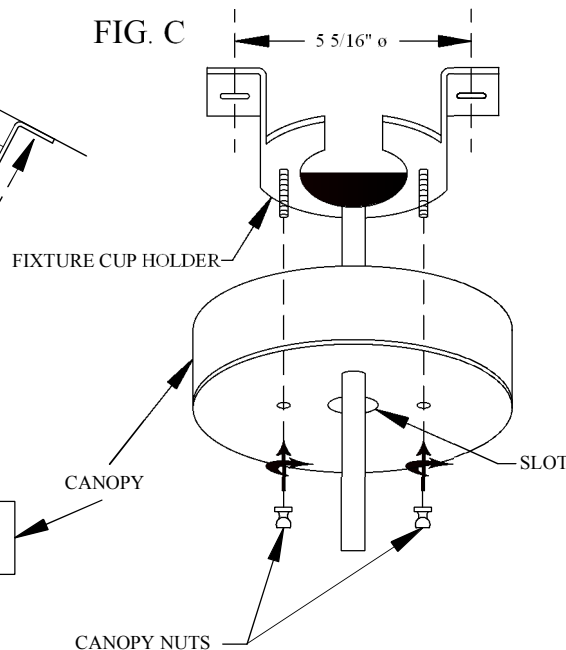
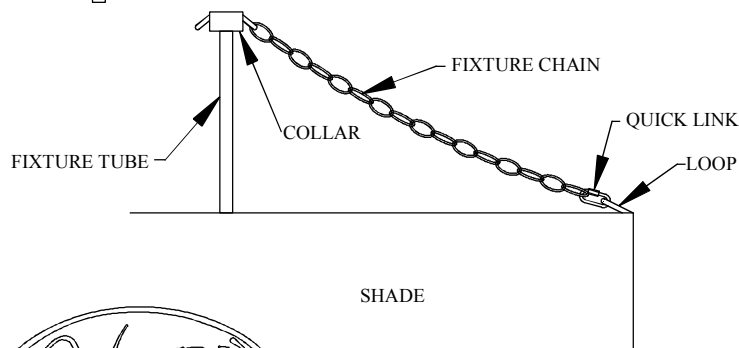


FIG. D



IMPORTANT

TURN OFF THE POWER AT THE MAIN FUSE OR CIRCUIT BREAKER BOX BEFORE STARTING INSTALLATION

CAREFULLY UNPACK AND IDENTIFY ALL PARTS BEFORE ASSEMBLY. BULBS ARE NOT INCLUDED

THIS FIXTURE WEIGHS OVER 50 LBS.

NEC:314.27B, A luminaire that weighs more than 23kg (50lb) shall be supported independently of the outlet box unless the outlet box is listed AND MARKED for the MAXIMUM weight supported.

THIS IS A TWO PERSON JOB

- 1.) ATTACH FIXTURE CUP HOLDER TO A SECURE LOCATION USING FASTENERS SUPPLIED BY OTHERS. FIG. B
- 2.) CUT DOWN ROD TO DETERMINED LENGTH BY MEASURING UP FROM DOWN ROD PLATE.
- 3.) REDRILL A 1/4" HOLE 1/4" DOWN FROM CUT EDGE OF DOWN ROD.
- 2.) FEED WIRES THROUGH DOWN ROD. PLACE DOWN ROD PLATE ONTO HUB BOLTS (4) AND TIGHTEN WITH LOCK NUTS PROVIDED FIG. A.

FOR SLANTED CEILING

- 3.) SLIDE CANOPY ONTO DOWN ROD FIG. A
- 4.) PLACE FIXTURE CUP ONTO DOWN ROD. INSERT PIN INTO END OF DOWN ROD MAKING SURE PIN IS CENTERED TO ENSURE PROPER SEATING INTO FIXTURE CUP. FIG. A
- 5.) HANG FIXTURE BY SLIDING FIXTURE CUP THROUGH SLOT IN FIXTURE CUP HOLDER. FIG. B
- 6.) WIRE AS PER LOCAL ELECTRICAL CODES.
- 7.) ATTACH CANOPY FASTENING WITH CANOPY NUTS PROVIDED. FIG. C

FOR FLAT CEILING

- 8.) FEED WIRES THROUGH DOWN ROD. PLACE DOWN ROD PLATE ONTO HUB BOLTS (4) AND TIGHTEN WITH LOCK NUTS PROVIDED FIG. A.)
- 9.) SLIDE COVER PLATE THEN CANOPY OVER DOWN ROD. FIG. A
- 10.) PLACE FIXTURE CUP ONTO DOWN ROD. INSERT PIN INTO END OF DOWN ROD MAKING SURE PIN IS CENTERED TO ENSURE PROPER SEATING INTO FIXTURE CUP. FIG. A
- 11.) HANG FIXTURE BY SLIDING FIXTURE CUP THROUGH SLOT IN FIXTURE CUP HOLDER. FIG. B
- 12.) WIRE AS PER LOCAL ELECTRICAL CODES.
- 13.) ATTACH CANOPY AND COVER PLATE, FASTENING WITH CANOPY NUTS PROVIDED. FIG. C.
- 14.) SLIDE COLLAR DOWN FIXTURE TUBE, ATTACH CHAIN TO LOOP OF SHADE WITH QUICK LINK. SLIDE COLLAR UP TO TIGHTEN CHAIN. TIGHTEN COLLAR.

"A Commitment to Excellence in Lighting and Service"

CALL OUR CUSTOMER SERVICE DEPARTMENT AT 1-800-222-4009

MONDAY - FRIDAY 8:00a.m - 6:00p.m ET

visit us on the web at www.meyda.com



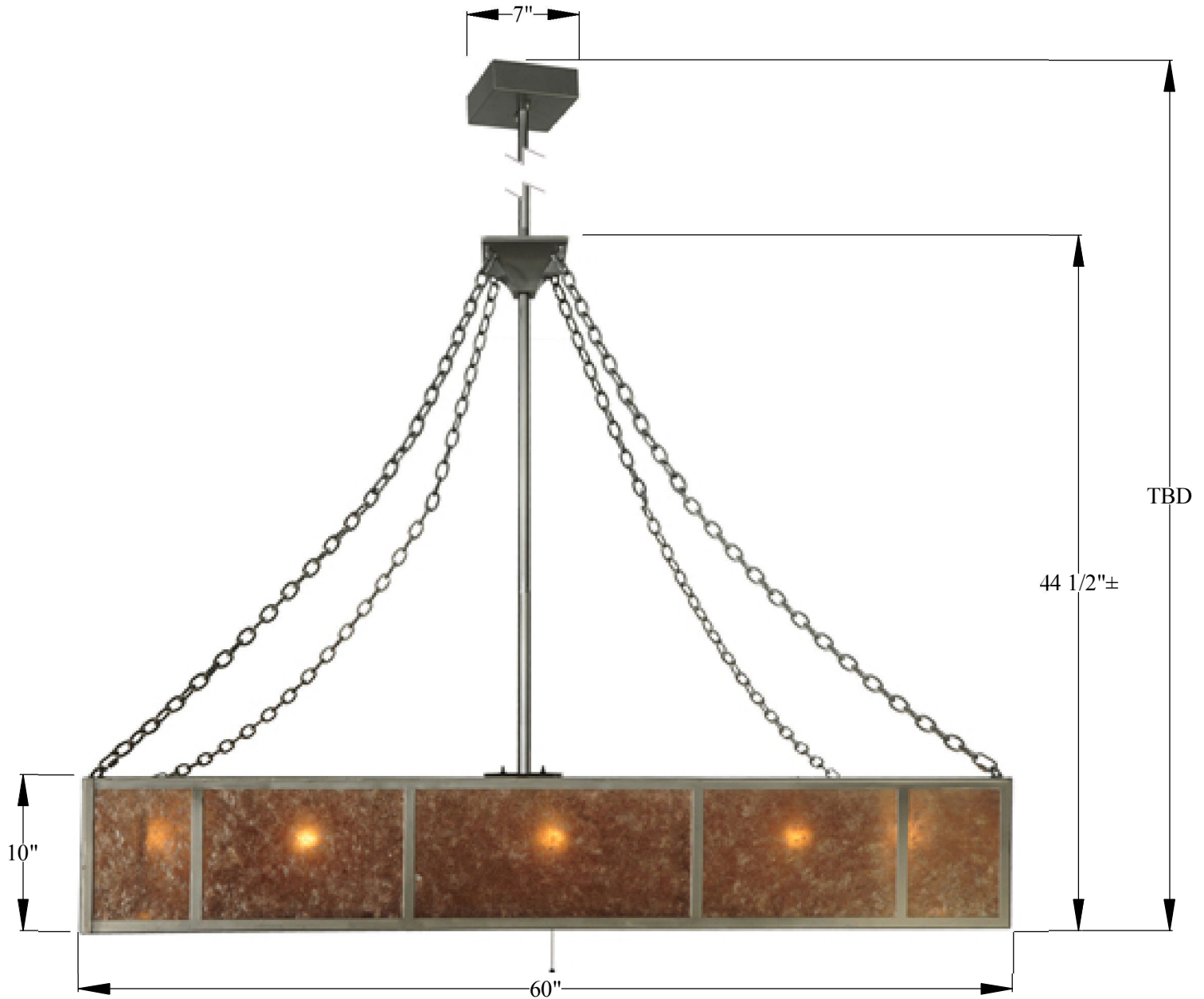
SPECIFICATIONS

"A Commitment to Excellence in Lighting and Service"

CALL OUR CUSTOMER SERVICE DEPARTMENT AT 1-800-222-4009

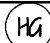
MONDAY - FRIDAY 8:00a.m - 6:00p.m ET

visit us on the web at www.meyda.com



*DIMENSIONS AND DETAILS DURING PRODUCTION ARE SUBJECT TO MODIFICATION FOR MECHANICAL/ENGINEERING PURPOSES TO ENSURE THE SAFE OPERATION AND LONGEVITY OF PRODUCT.
© MEYDA TIFFANY INC © DESIGN COPYRIGHT, MEYDA TIFFANY, INC. ALL RIGHTS RESERVED, NO UNAUTHORIZED DUPLICATION



ITEM#130325	BULB# 4/12	LOCATION:	
DESIGN#	TYPE: MEDIUM BASE		Date:
FIXTURE TYPE: CHANDEL-AIR	WATT: 50/60/12	DIMENSIONS/NOTES: SCALE N.T.S.	
LENS COLOR: SILVER MICA	VOLTAGE: 120	APPROVAL	
FINISH:	MATERIAL: STEEL GLASS	WEIGHT: 98 LBS	

Fan Specifications

Integrating the best of both worlds, Chanlel-Air incorporates custom lighting design with fan technologies. Form and function presented beautifully. Designed for ceilings of any pitch or height. Dimming capabilities included. Fan specifications listed below.

Features

Standard, 3 Speed Reversible motor

Small Space Flushmount Installation

30 Year Limited Warranty

Blades Sold Separately

Light Kit Adaptable (optional)

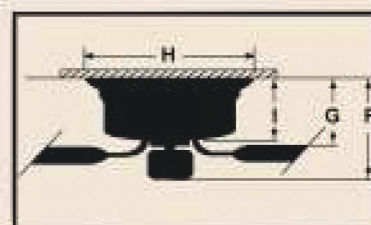
Universal Control Adaptable (UC-2000)

Selections Available in 42" Size
(See Finishes Chart for Options)

Specs

Blade Sweep	42"
Number of Blades	5
Blade Pitch	14°
Motor Size (MM)	153 x 8
AMPS (HI Speed)	0.36
Watts (HI Speed)	43
RPM (HI-MED-LOW)	200-120-55
Shipping Wt. (lbs.)	12.02
CU. FT in Carton	1.7

Ceiling Drop Dimensions



F: 7.875"

G: 5.25"

H: 11.0"

I: 5.0"

Available Finishes



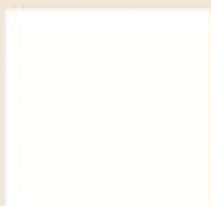
AB - Antique Brass



BN - Brushed Nickel



OB - Oiled Bronze



W - White

Blade Options: Type 2 Blades



Remotes (optional)

Universal Remote Control System with Receiver



UC-2000.W

*remote control units may vary