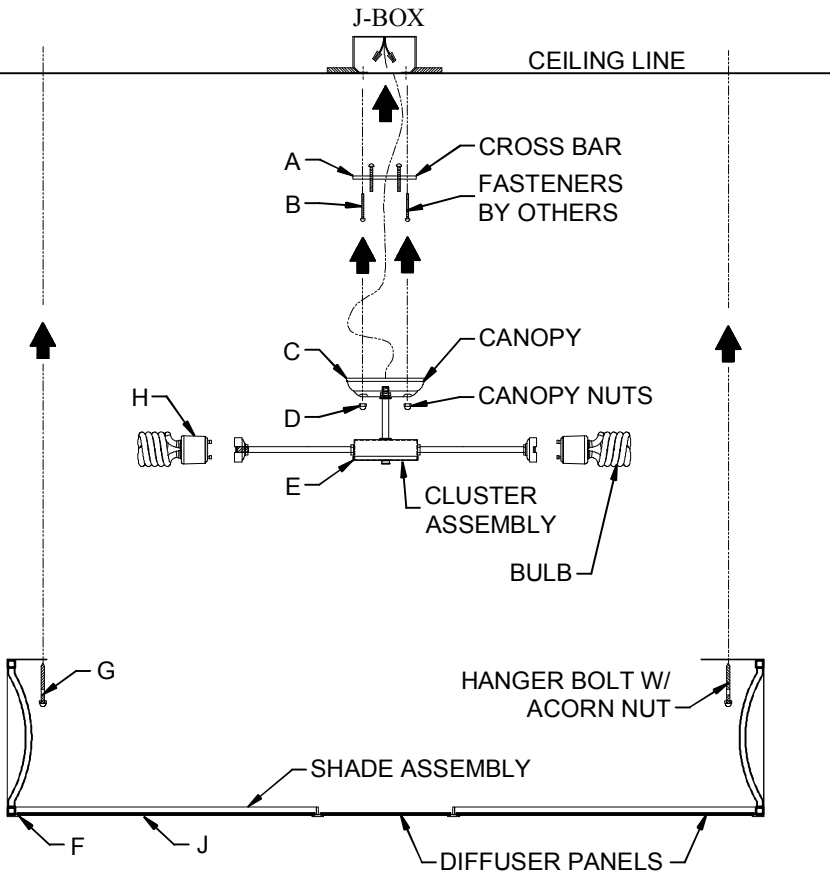


# ASSEMBLY INSTRUCTIONS FOR #153393

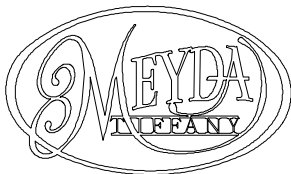


## IMPORTANT

TURN OFF THE POWER AT THE MAIN FUSE OR CIRCUIT BREAKER BOX BEFORE STARTING INSTALLATION

CAREFULLY UNPACK AND IDENTIFY ALL PARTS BEFORE ASSEMBLY. BULBS ARE NOT INCLUDED

- 1) ATTACH CROSS BAR (A) TO "J" BOX WITH FASTENERS (B) PROVIDED BY OTHERS.
- 2) WIRE AS PER LOCAL ELECTRICAL CODES.
- 3) PLACE CLUSTER ASSEMBLY (E) TO CEILING AND SECURE IN PLACE WITH CANOPY NUTS (D).
- 4) CENTER SHADE ASSEMBLY (F) OVER CLUSTER ASSEMBLY (E), PLACE TO CEILING AND SECURE TO CEILING WITH HANGER BOLTS & NUTS (G).
- 5) INSTALL LAMPING (BULBS).
- 6) INSTALL BOTTOM DIFFUSER PANELS (J).



*"A Commitment to Excellence in Lighting and Service"*

CALL OUR CUSTOMER SERVICE DEPARTMENT AT 1-800-222-4009

MONDAY - FRIDAY 8:00a.m - 6:00p.m ET

visit us on the web at [www.meyda.com](http://www.meyda.com)