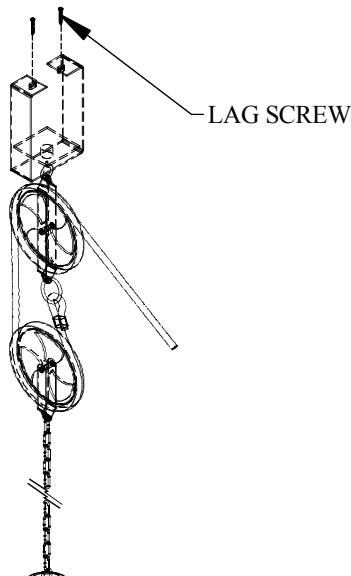


CH 6

FIG. A



IMPORTANT

TURN OFF THE POWER AT THE MAIN FUSE OR CIRCUIT BREAKER BOX BEFORE STARTING INSTALLATION

CAREFULLY UNPACK AND IDENTIFY ALL PARTS BEFORE ASSEMBLY. BULBS ARE NOT INCLUDED

THIS FIXTURE WEIGHS OVER 50 LBS. NEC:314.27B, A luminaire that weighs more then 23kg (50lb) shall be supported independently of the outlet box unless the outlet box is listed AND MARKED for the MAXIMUM weight supported.

THIS INSTALLATION REQUIRES TWO PEOPLE

- 1.) FRAMES AND SHADES ARE LABELED A,B,C,D,E AND MUST BE MATCHED DURING ASSEMBLY.
- 2.) PLACE SHADE INTO FRAME AND LINE UP MARKS (A-1) WITH CORRESPONDING MARKS ON FRAME FIG A.
- 3.) PLACE 4 SQUARE SPACER TUBES BETWEEN FRAME AND FACE OF SHADE FIG A.
- 4.) PLACE FINISHED SQUARE METAL WASHERS BETWEEN SQUARE SPACERS AND ACRYLIC SHADE.
- 4.) FROM INSIDE OF SHADE, PLACE SQUARE ACRYLIC WASHERS OVER HOLES AND SCREW BUTTON HEAD FASTENERS SECURELY FIG A.
- 5.) PLACE FLAT BRACKETS WITH HOLES CLOSEST TO EDGE OVER FRAME VERTICLES AND LOOSELY SCREW ON LOOPS FIG. B.
- 6.) LINE UP BRACKET HOLES AND INSERT BUTTON HEAD SCREWS. UNDER LIP OF SHADE PLACE CLEAR SQUARE WASHER OVER SCREW AND SECURE WITH PROVIDED NUTS. FINISH TIGHTENING LOOP FIG B.
- 7.) HOOK CLEVIS OVER BEAM AND SCREW LAG SCREW THROUGH SLOTTED HOLE. DO NOT TIGHTEN COMPLETELY.
- 8.) WHILE SUPPORTING ASSEMBLY, MOUNT THE OTHER CLEVIS BRACKET OVER THE 2 REMAING THREADED STUDS AND HOOK THE CLEVIS BRACKET OVER THE BEAM. SCREW THE LAG INTO THE SLOTTED HOLE AND INSTALL ACORN NUTS BEFORE REMOVING SUPPORT. TIGHTEN ALL FASTENERS SECURELY.
- 9.) WIRE AS PER LOCAL ELECTRICAL CODES.
- 10.) WHILE HOLDING FIXTURE, HOOK CANOPY CHAINS TO FIXTURE LOOPS USEING QUICK LINKS AND TIGHTEN.
- 11.) FASTEN ROPE CLEAT TO DESIRED POSITION.

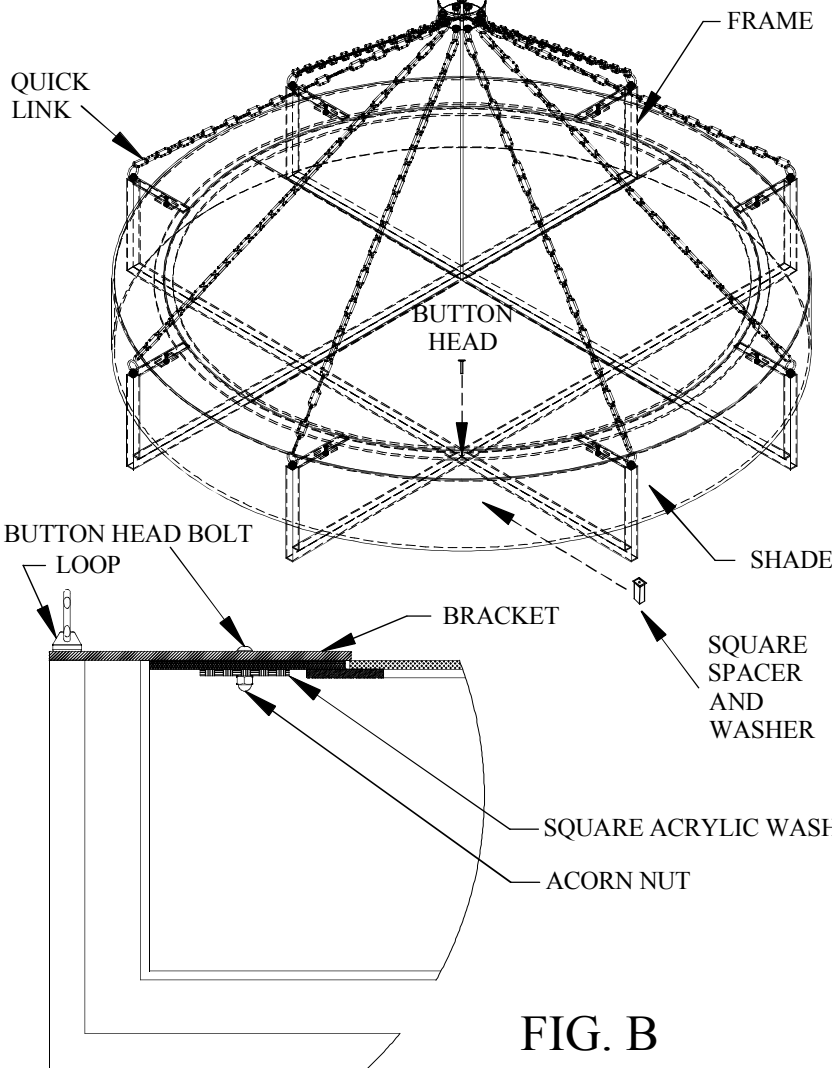
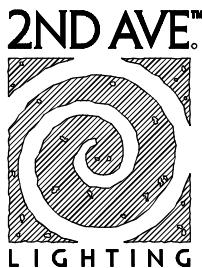


FIG. B



"A Commitment to Excellence in Lighting and Service"

CALL OUR CUSTOMER SERVICE DEPARTMENT AT 1-800-843-1602

MONDAY - FRIDAY 8:00a.m - 6:00p.m ET

visit us on the web at www.2ndave.com